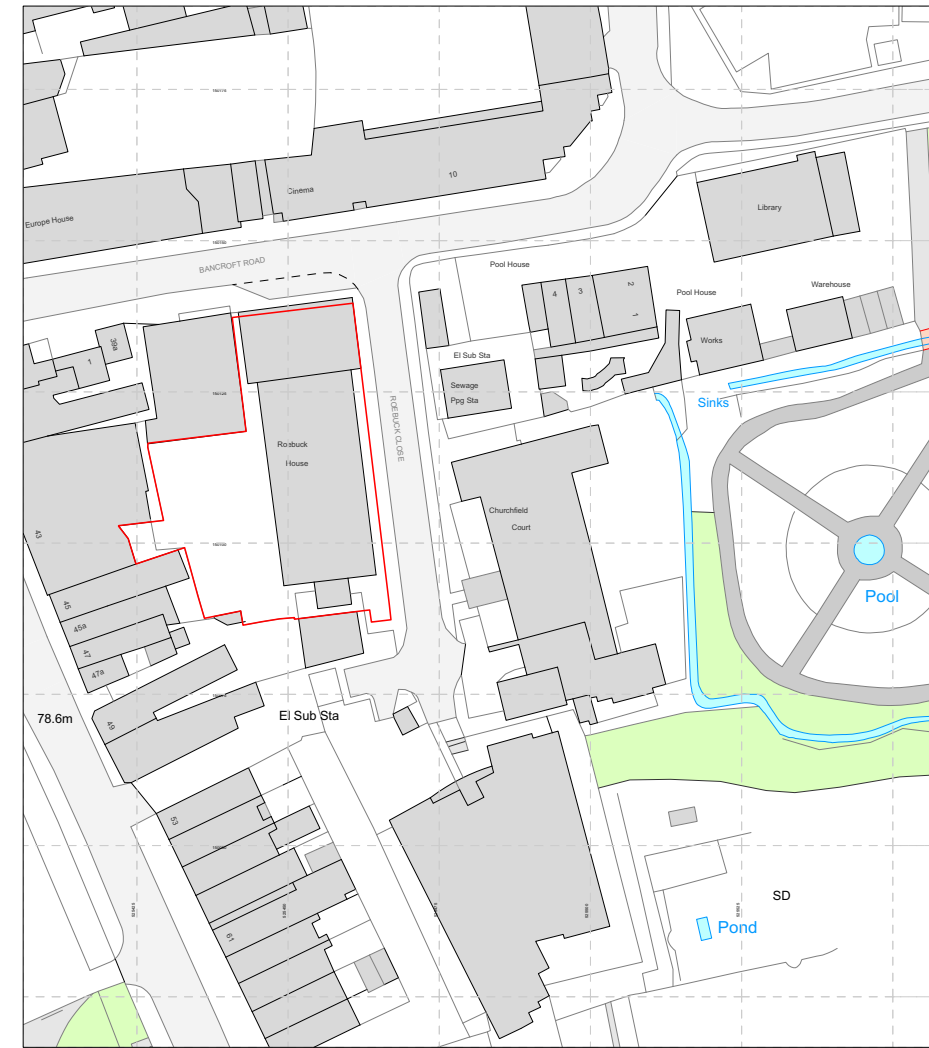
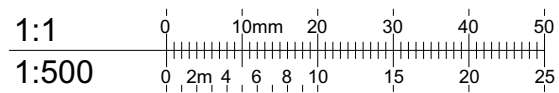
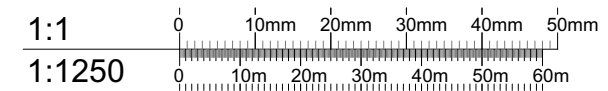


Proposed Block Plan (Roof) - 1:500 @ A3



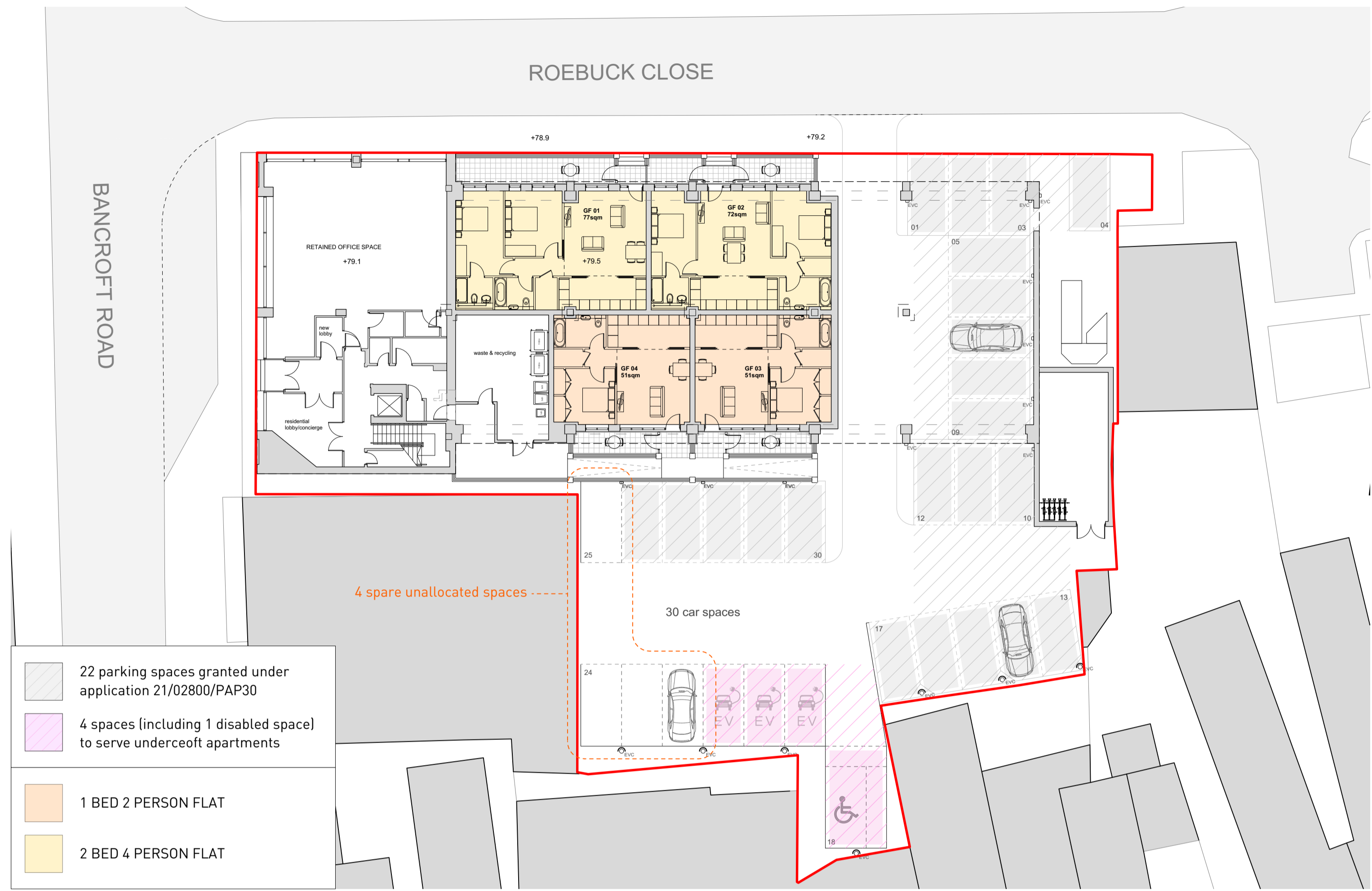
Site Location - 1:1250 @ A3



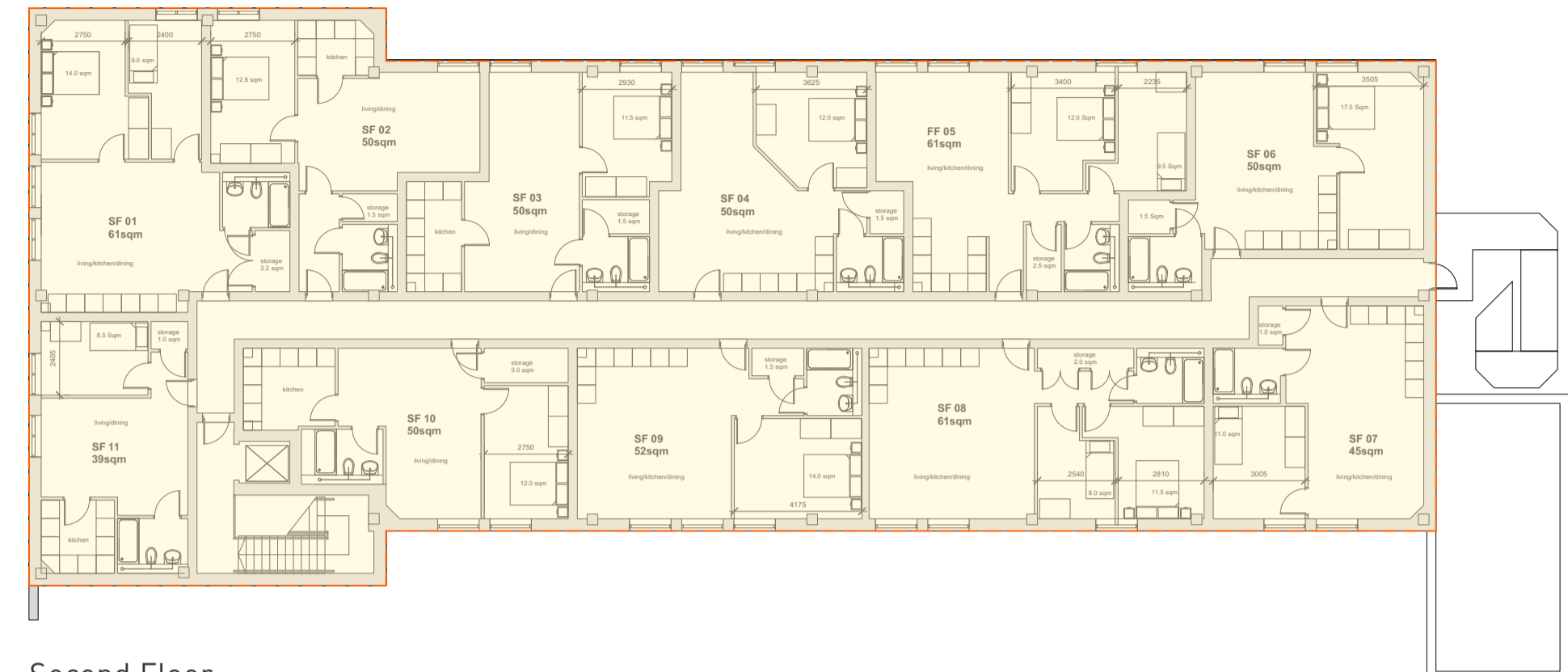




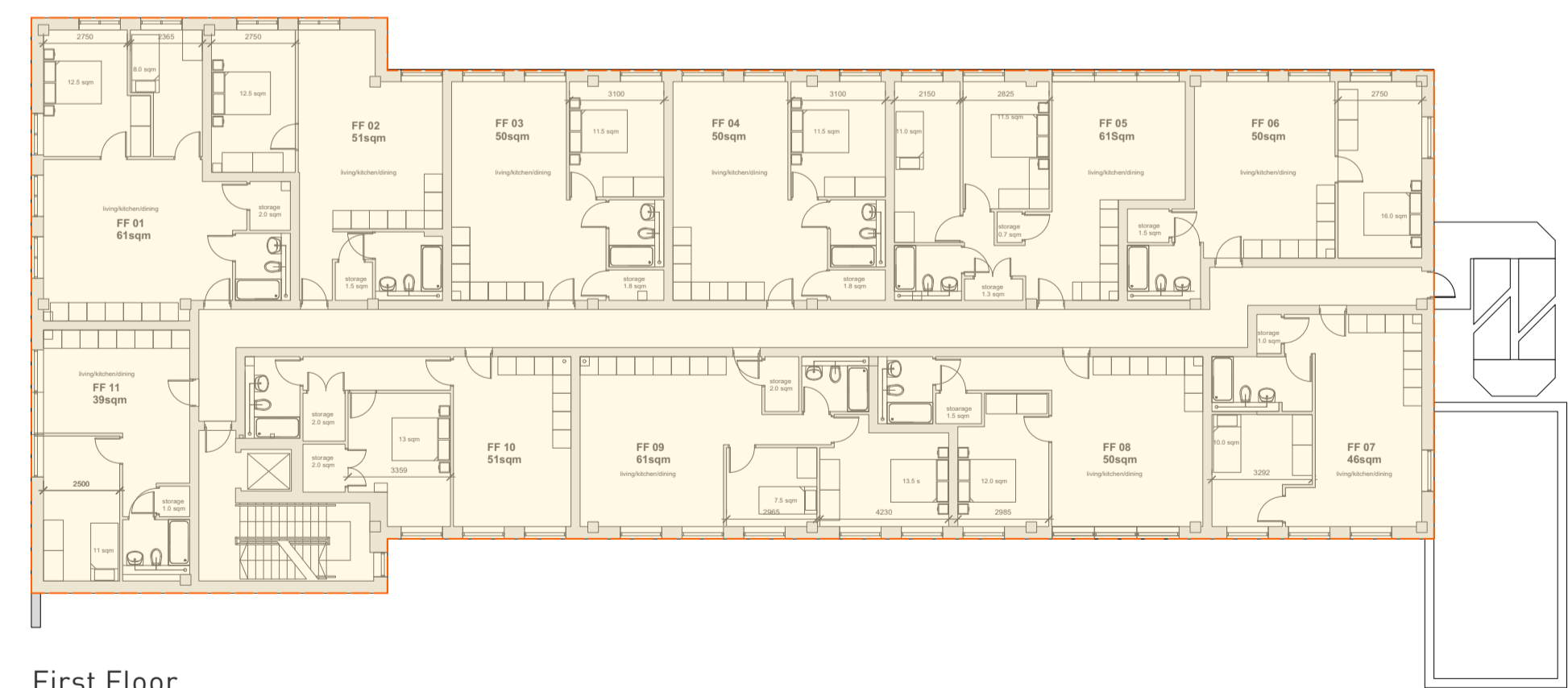




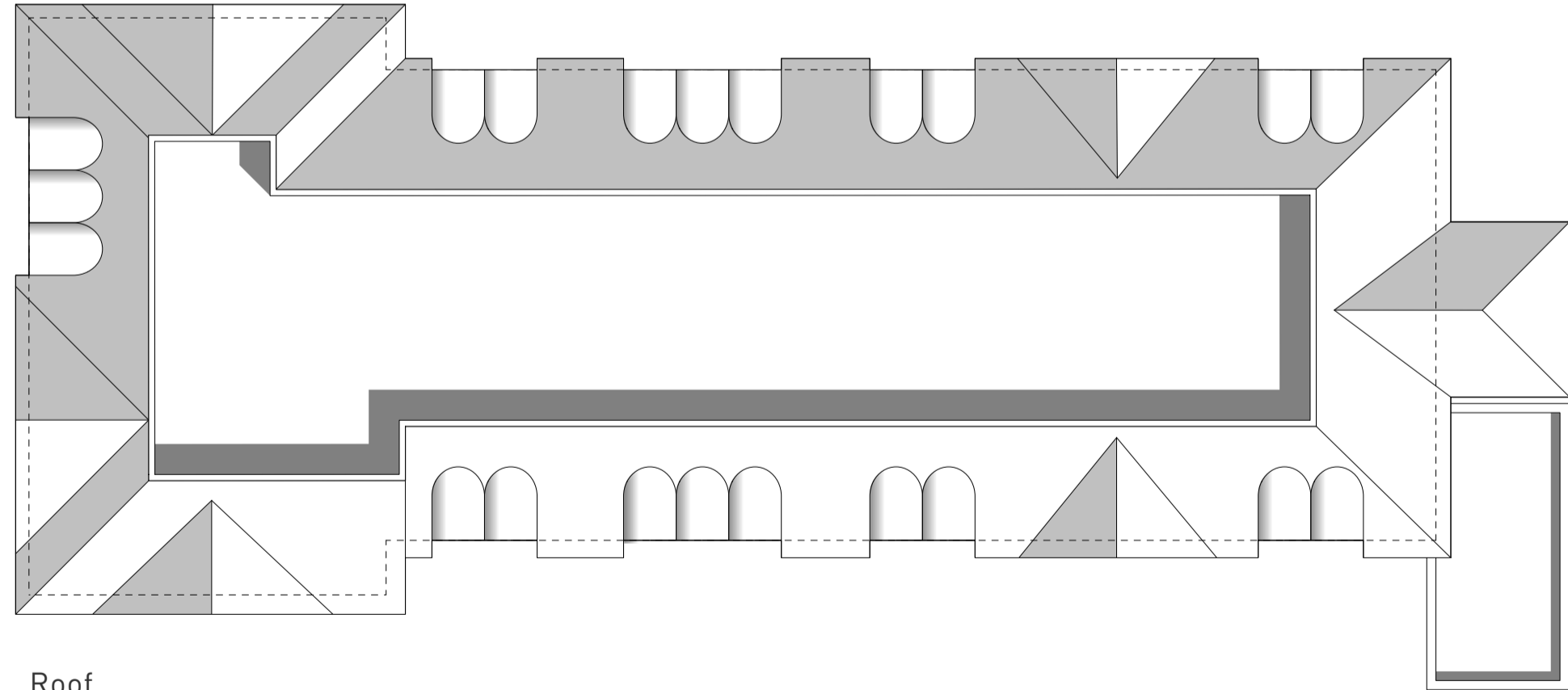
Ground Floor



Second Floor

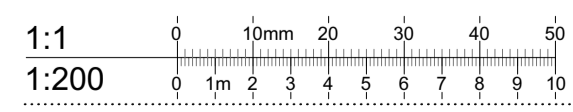


First Floor



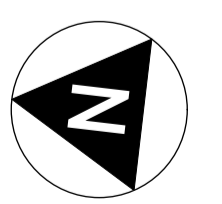
Roof

RESIDENTIAL LAYOUTS APPROVED UNDER PERMITTED DEVELOPMENT



russdragearchitects
architecture · masterplanning · urban design

Roebuck House, Reigate
4 Apartments to Infill Undercroft Carpark



+78.9

+79.2

RETAINED OFFICE SPACE

+79.1

GF 01
77sqm

GF 02
72sqm

+79.5

new lobby

waste & recycling

GF 04
51sqm

GF 03
51sqm

residential lobby/concierge

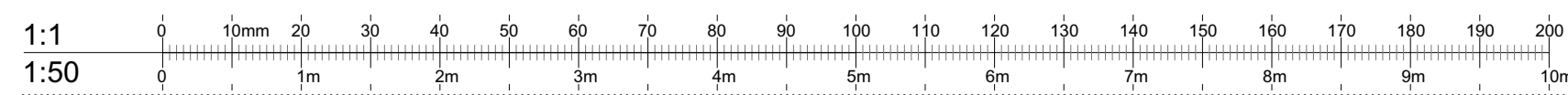
EVC

EVC

EVC

1 BED 2 PERSON FLAT

2 BED 4 PERSON FLAT

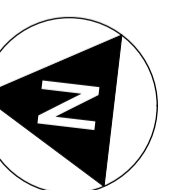


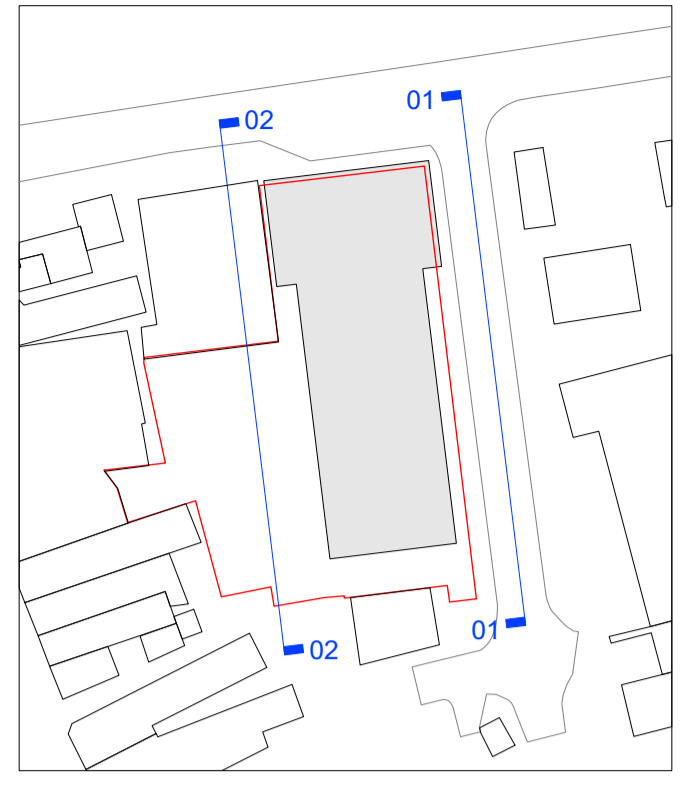
rusdragearchitects
architecture · masterplanning · urban design

Roebuck House, Reigate
4 Apartments to Infill Undercroft Carpark

AP261_P102 - Proposed Ground Floor

1:50B A1
MARCH 2023





- Materials Key**
- 01 - Red brick facade within undercroft arches
 - 02 - Aluminium framed entrance door and windows.
 - 03 - Painted steel balustrade on top of stone coping & brick wall to private terrace

01
02
03

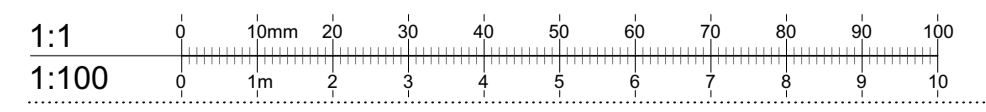


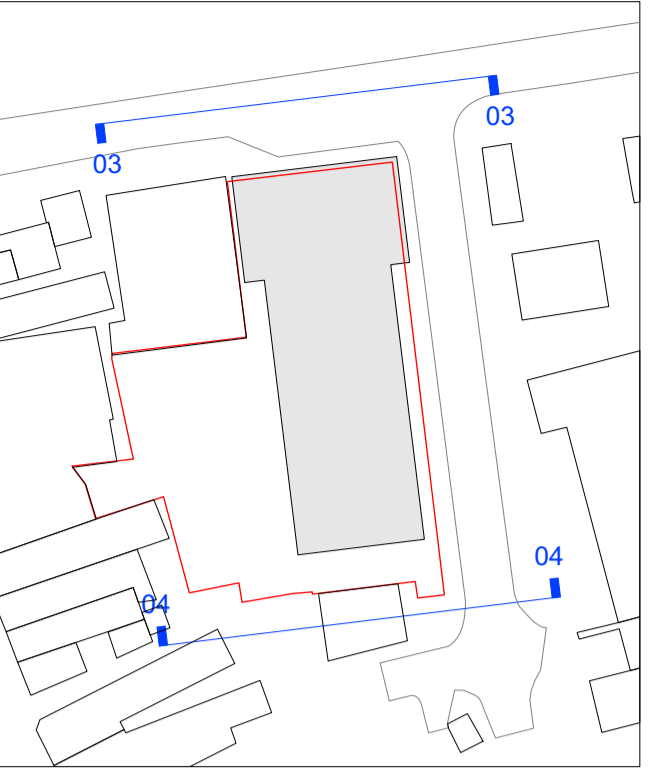
01 East Elevation

01
02
03

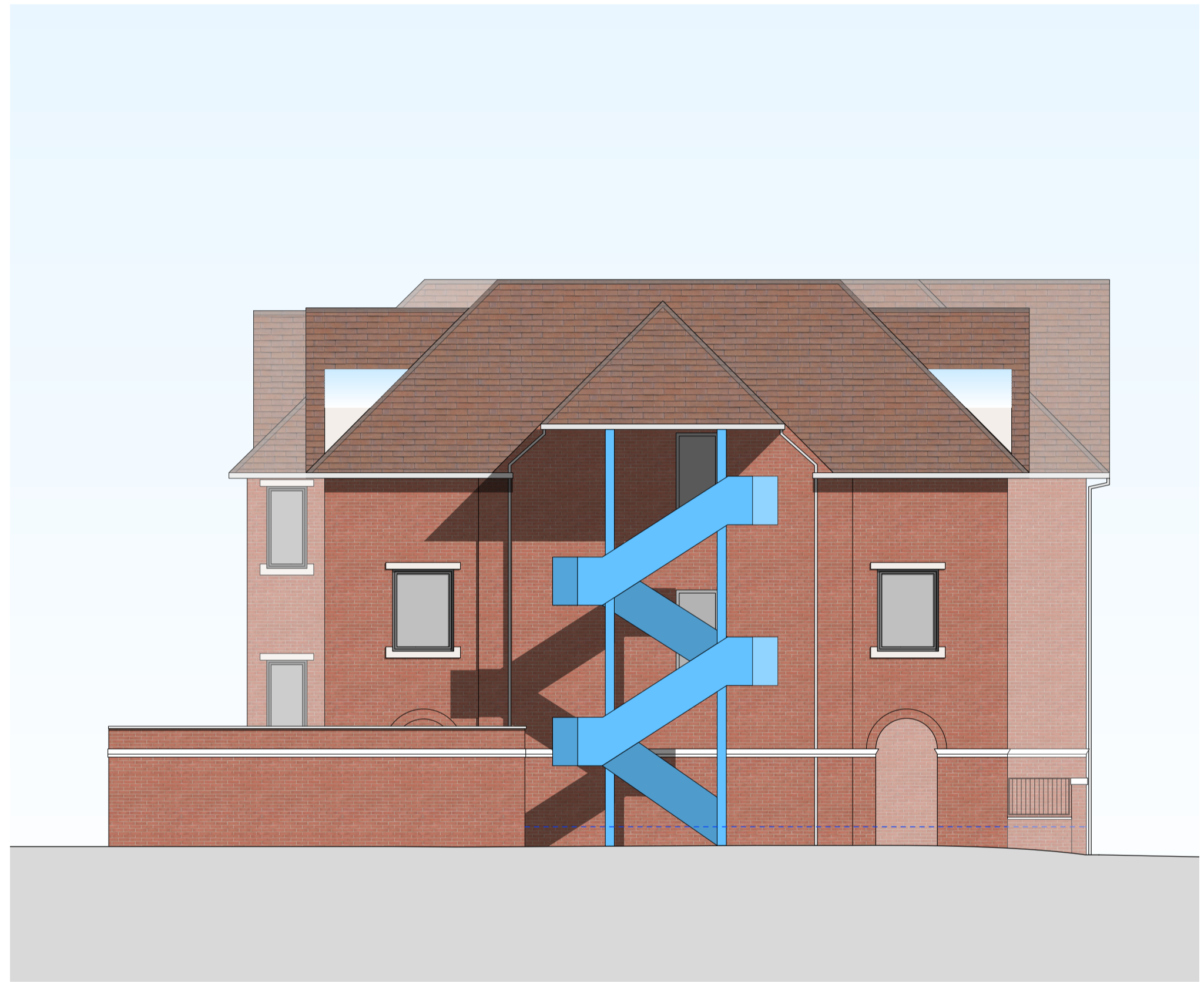


02 West Elevation





03 North Elevation (remains as existing)



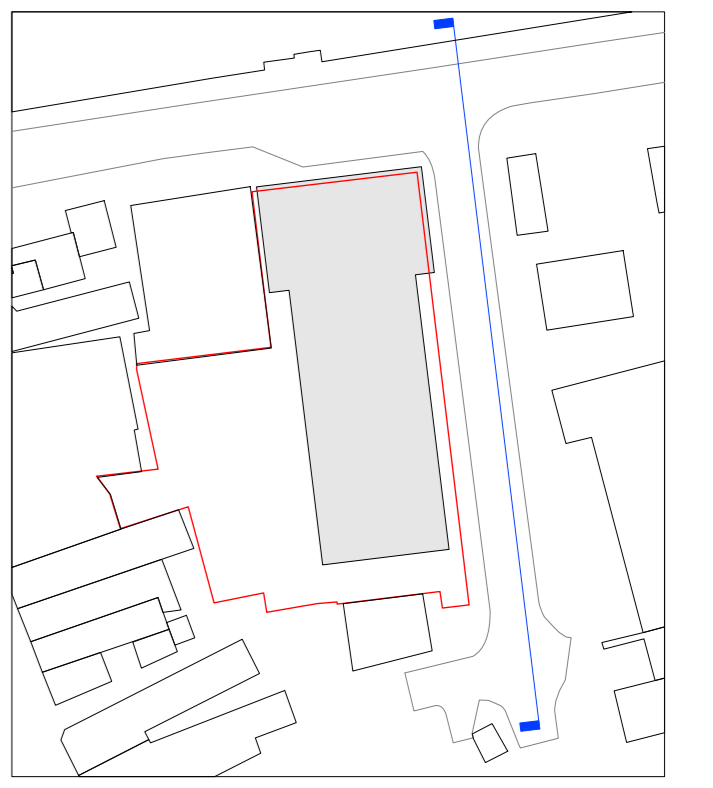
04 South Elevation (remains as existing)

1:1 0 10mm 20 30 40 50 60 70 80 90 100
 1:100 0 1m 2 3 4 5 6 7 8 9 10

rusdragearchitects
 architecture · masterplanning · urban design

Roebuck House, Reigate
 4 Apartments to Infill Undercroft Carpark

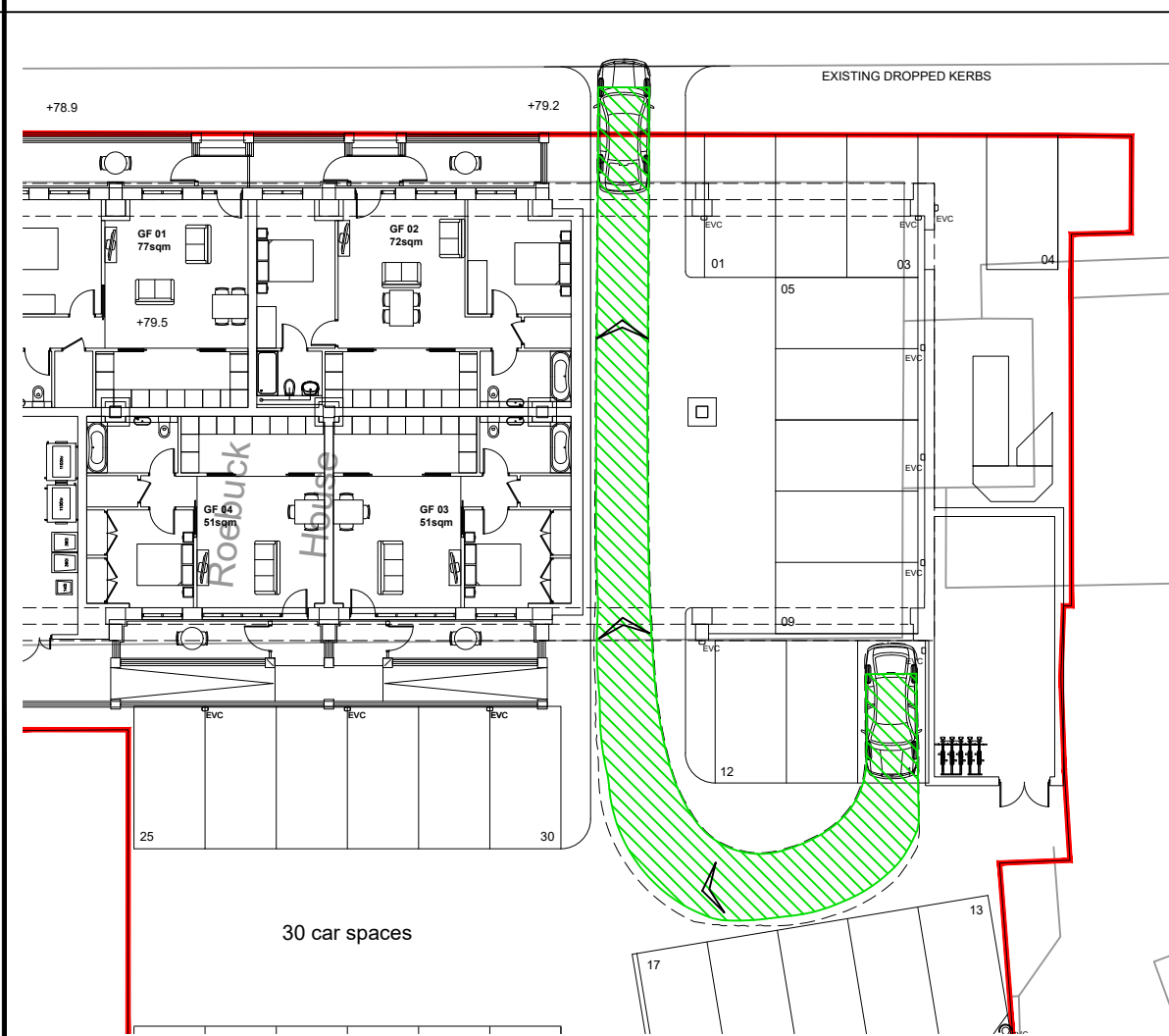
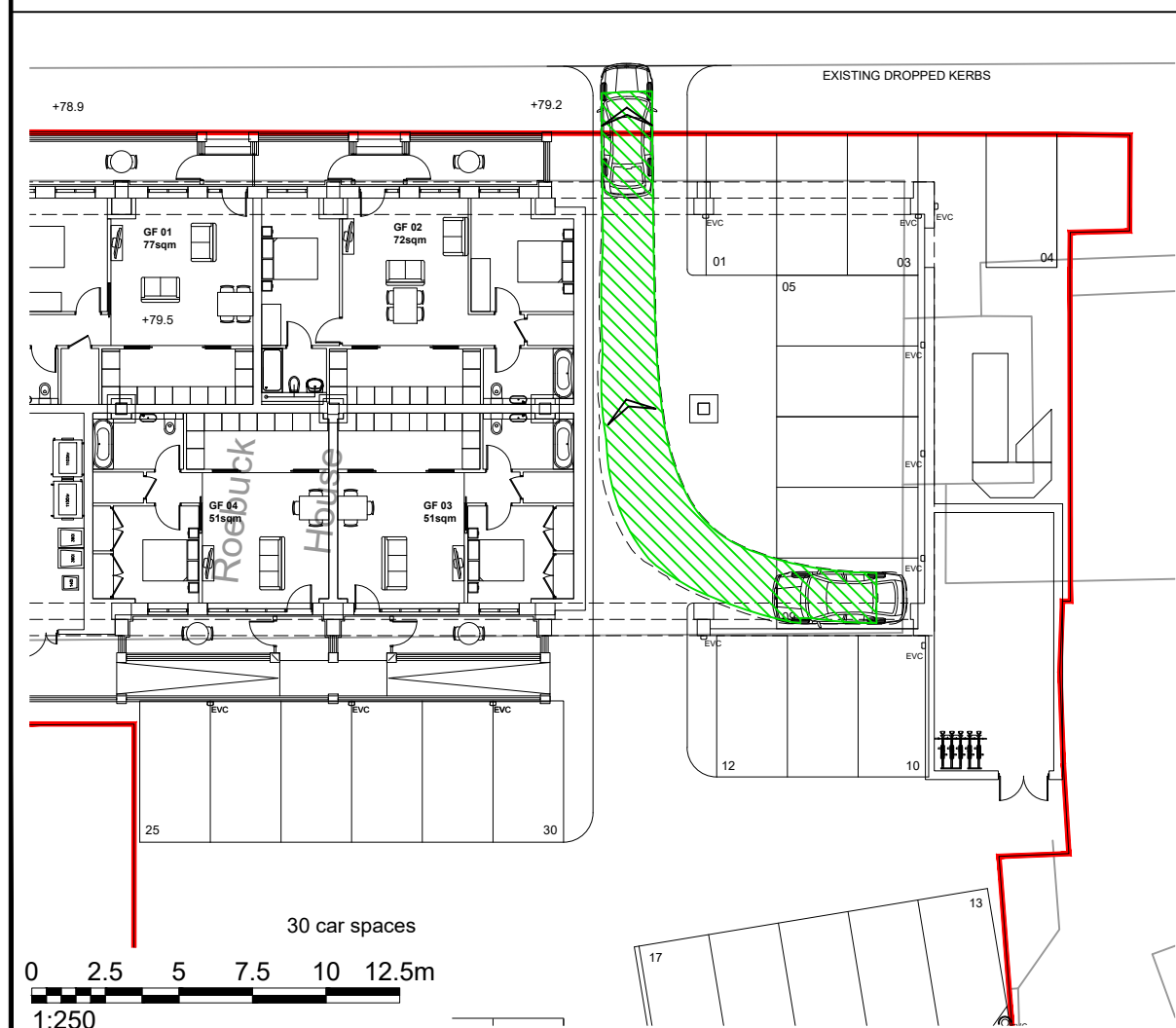
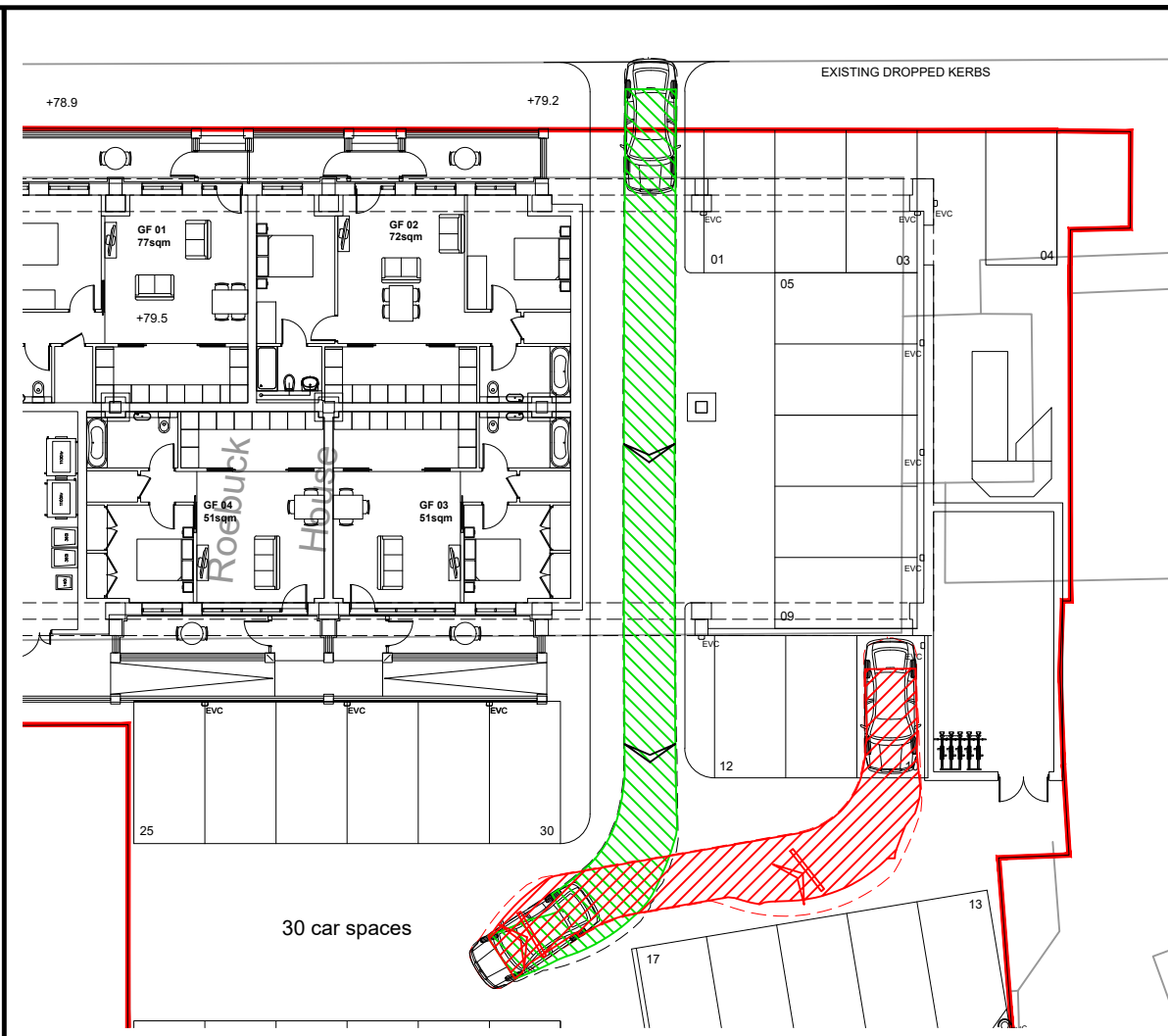
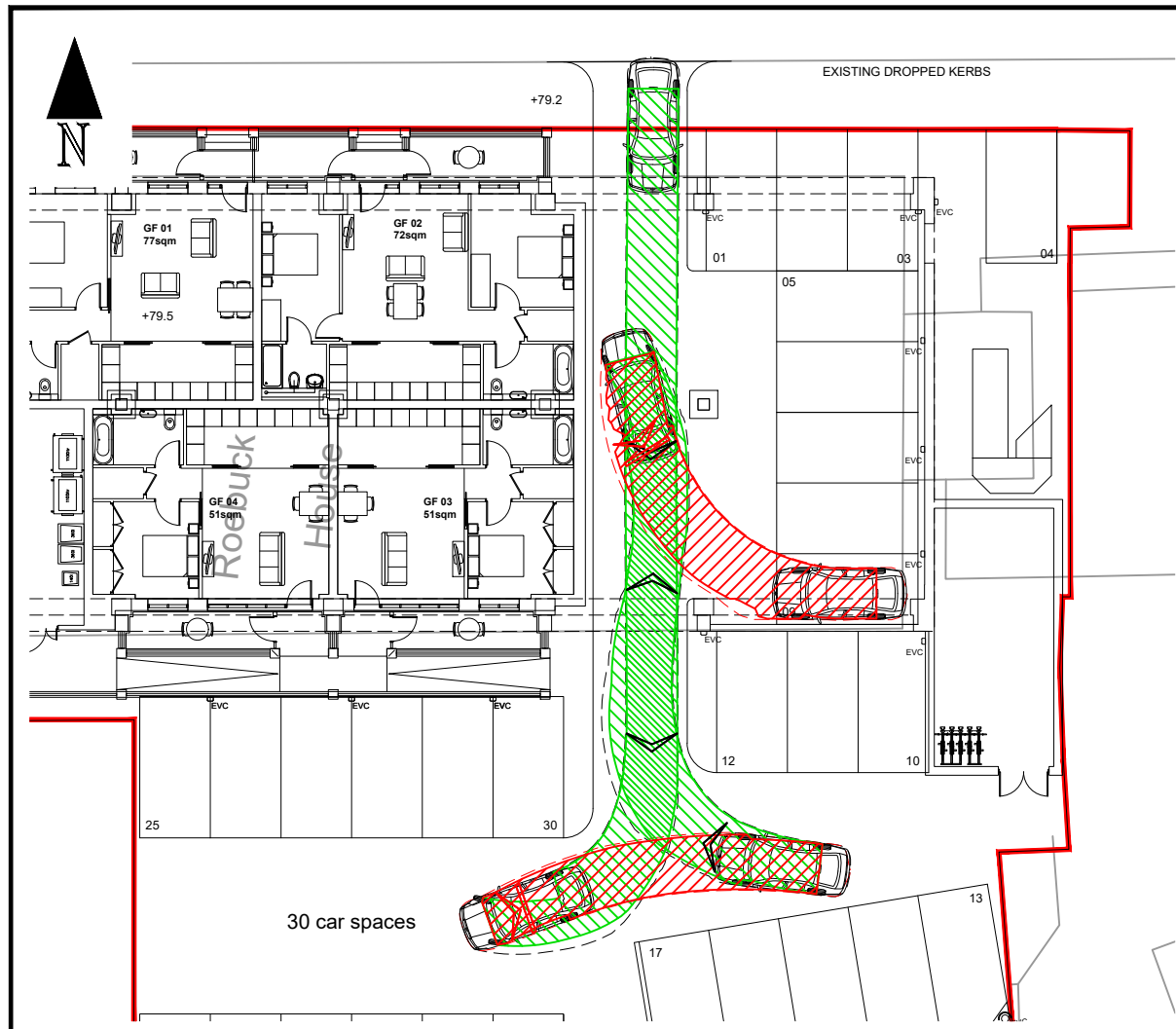
AP261_P111 - Proposed Elevations 02
 1:100B A1
 MARCH 2023



01 Existing Roebuck Close Elevation (east)

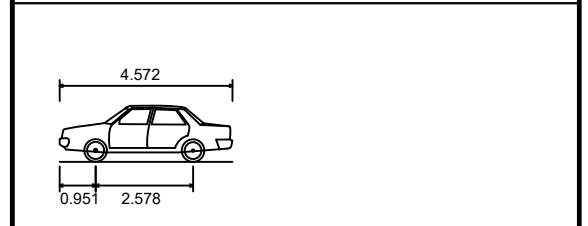


02 Proposed Roebuck Close Elevation (east)



- NOTES:**
1. Do not scale from this drawing.
 2. This drawing to be read & printed in colour.
 3. This drawing is for illustrative purposes only, and not for construction.

MEDIUM SIZE CAR (Skoda Octavia)



Overall Length	4.572m
Overall Width	1.769m
Overall Body Height	1.488m
Min Body Ground Clearance	0.249m
Max Track Width	1.713m
Lock to Lock Time	4.00s
Kerb to Kerb Turning Radius	5.100m

- FORWARD MOVEMENTS (design speed - 0.1kph)
- REVERSE MOVEMENTS (design speed - 0.1kph)

A	Vehicle Tracking Updated	AEG	KH	23.06.23
REV	DETAILS	DRAWN	CHECKED	DATE

CLIENT
Roebuck Close Ltd

PROJECT
Roebuck House, Reigate

DRAWING TITLE
Vehicular Swept Paths Analysis using Medium Size Car (Sheet 1 of 6)

SCALE
1:250

SIZE
A3

DRAWN BY
DW

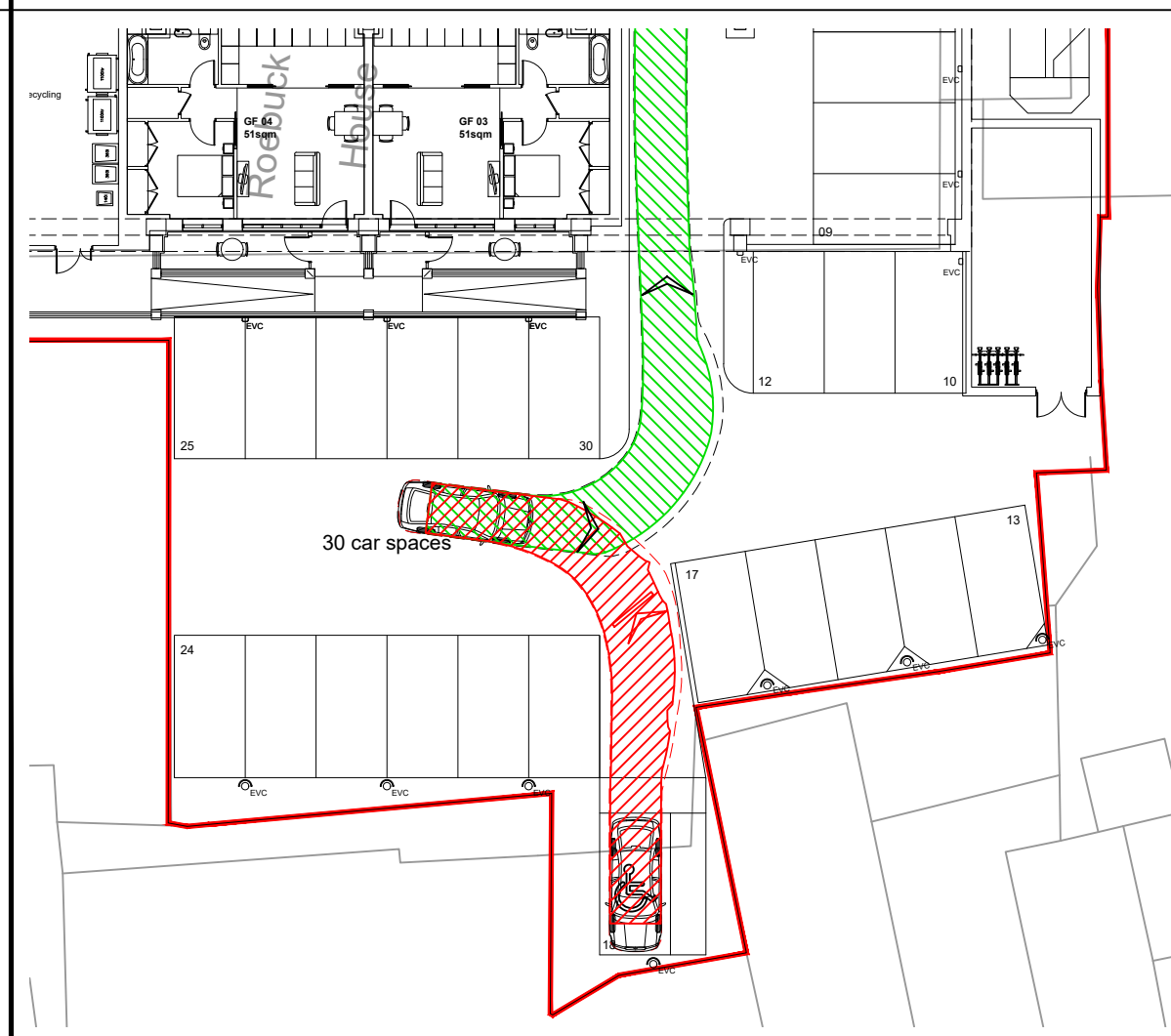
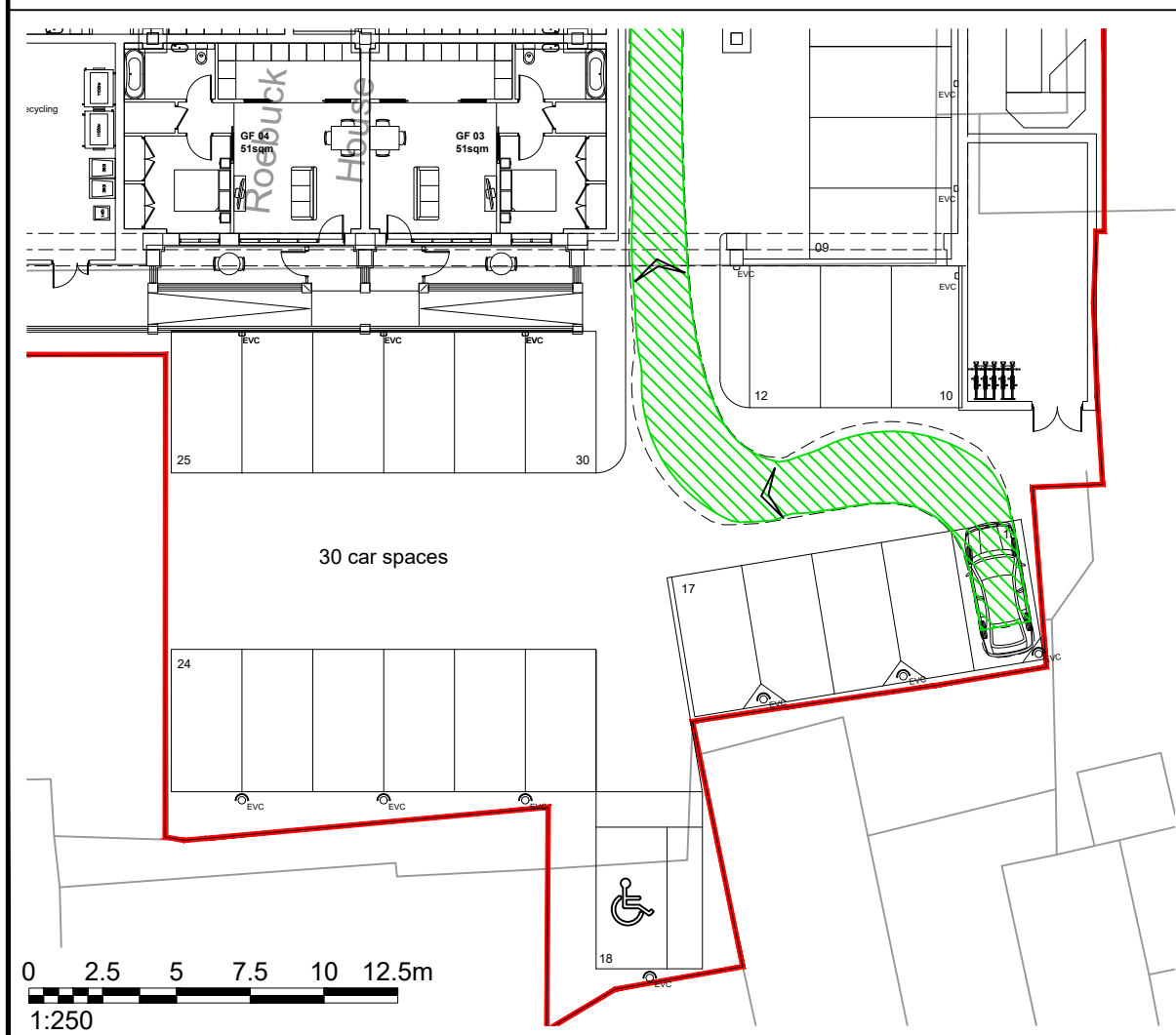
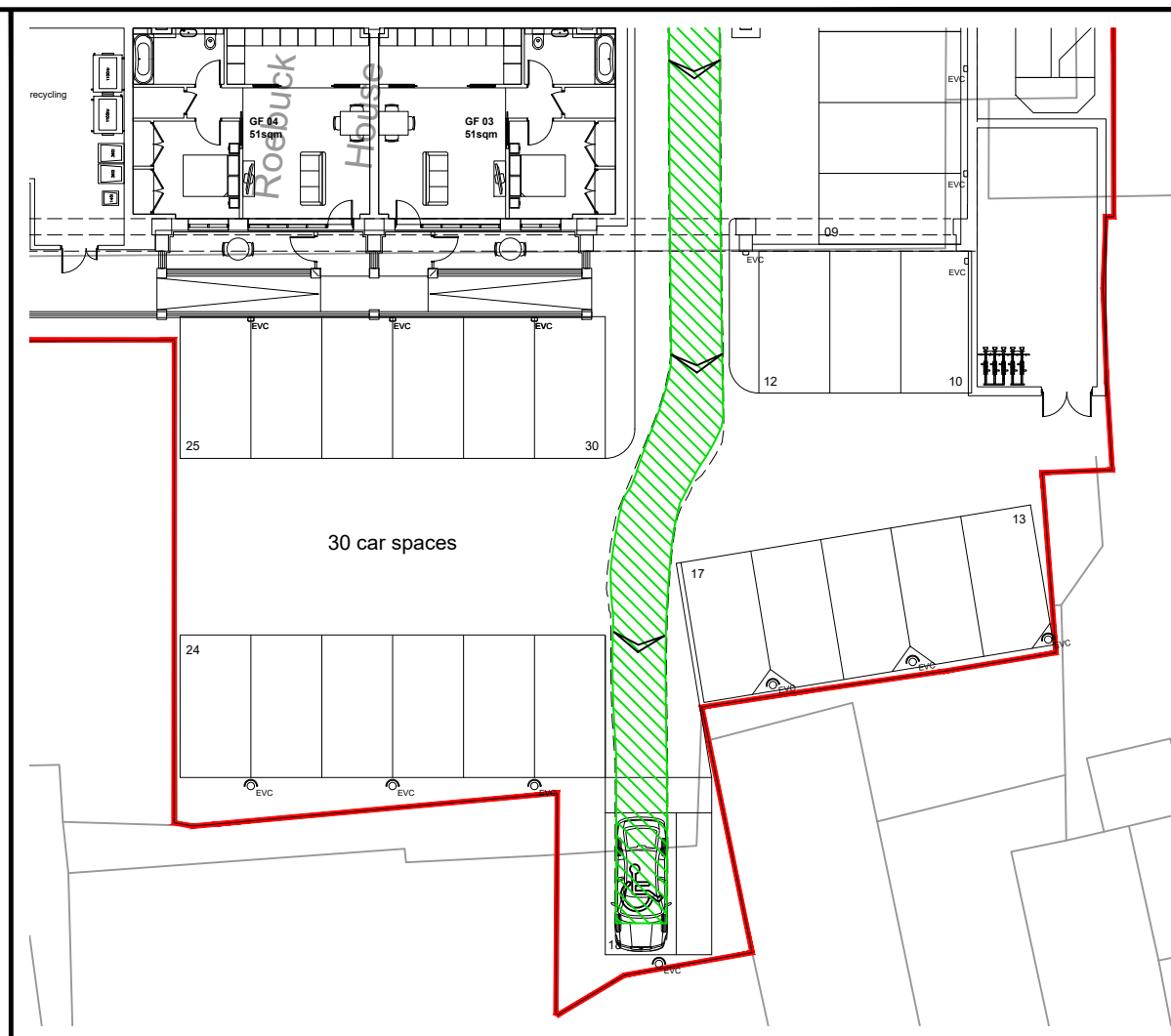
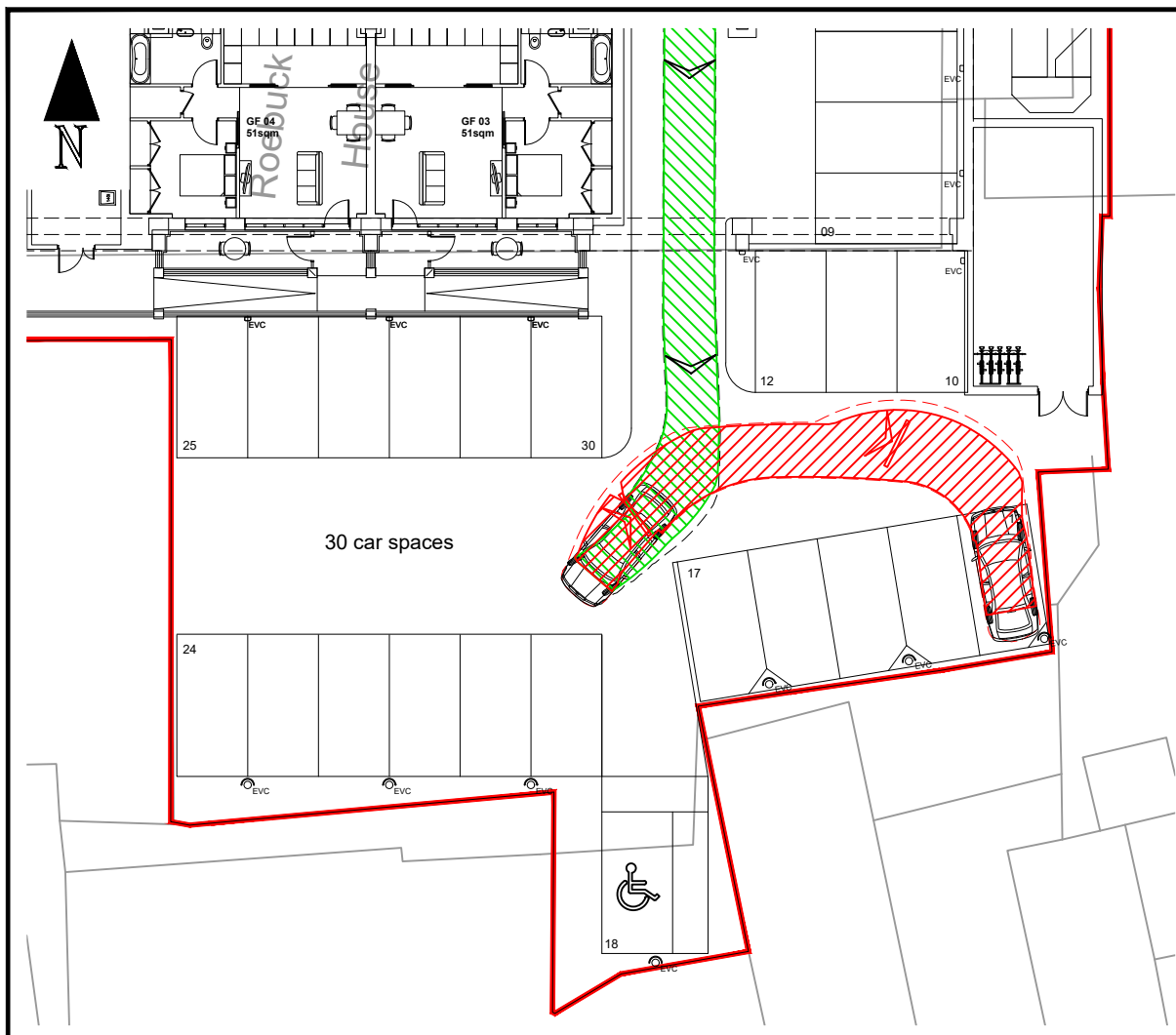
CHECKED BY
KH

DATE
21.06.2023

pulsar
TRANSPORT PLANNING

48 Charlotte Street, London, W1T 2NS
Tel: 020 3701 0400
www.pulsartransport.co.uk

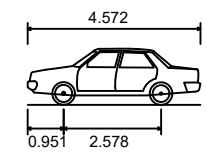
PROJECT REF 21037	DWG NO TR02 (1)	REV A
-----------------------------	---------------------------	-----------------



NOTES :

1. Do not scale from this drawing.
2. This drawing to be read & printed in colour.
3. This drawing is for illustrative purposes only, and not for construction.

MEDIUM SIZE CAR (Skoda Octavia)



Overall Length	4.572m
Overall Width	1.769m
Overall Body Height	1.488m
Min Body Ground Clearance	0.249m
Max Track Width	1.713m
Lock to Lock Time	4.00s
Kerb to Kerb Turning Radius	5.100m

- FORWARD MOVEMENTS (design speed - 0.1kph)
- REVERSE MOVEMENTS (design speed - 0.1kph)

A	Vehicle Tracking Updated	AEG	KH	23.06.23
REV	DETAILS	DRAWN	CHECKED	DATE

CLIENT
Roebuck Close Ltd

PROJECT
Roebuck House, Reigate

DRAWING TITLE
Vehicular Swept Paths Analysis using Medium Size Car (Sheet 2 of 6)

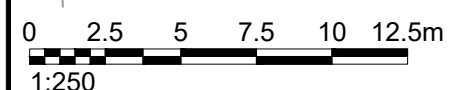
SCALE
1:250 SIZE
A3

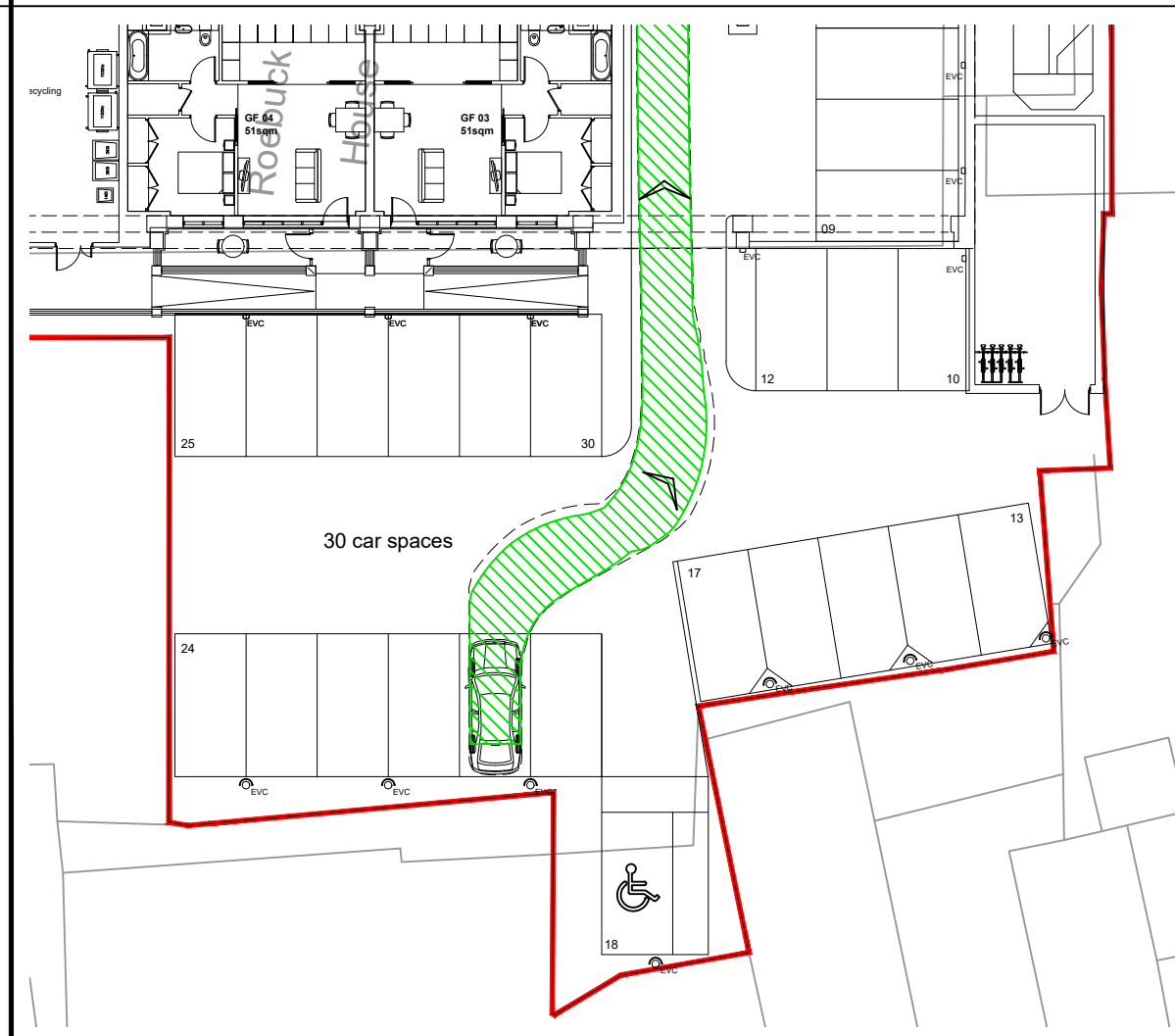
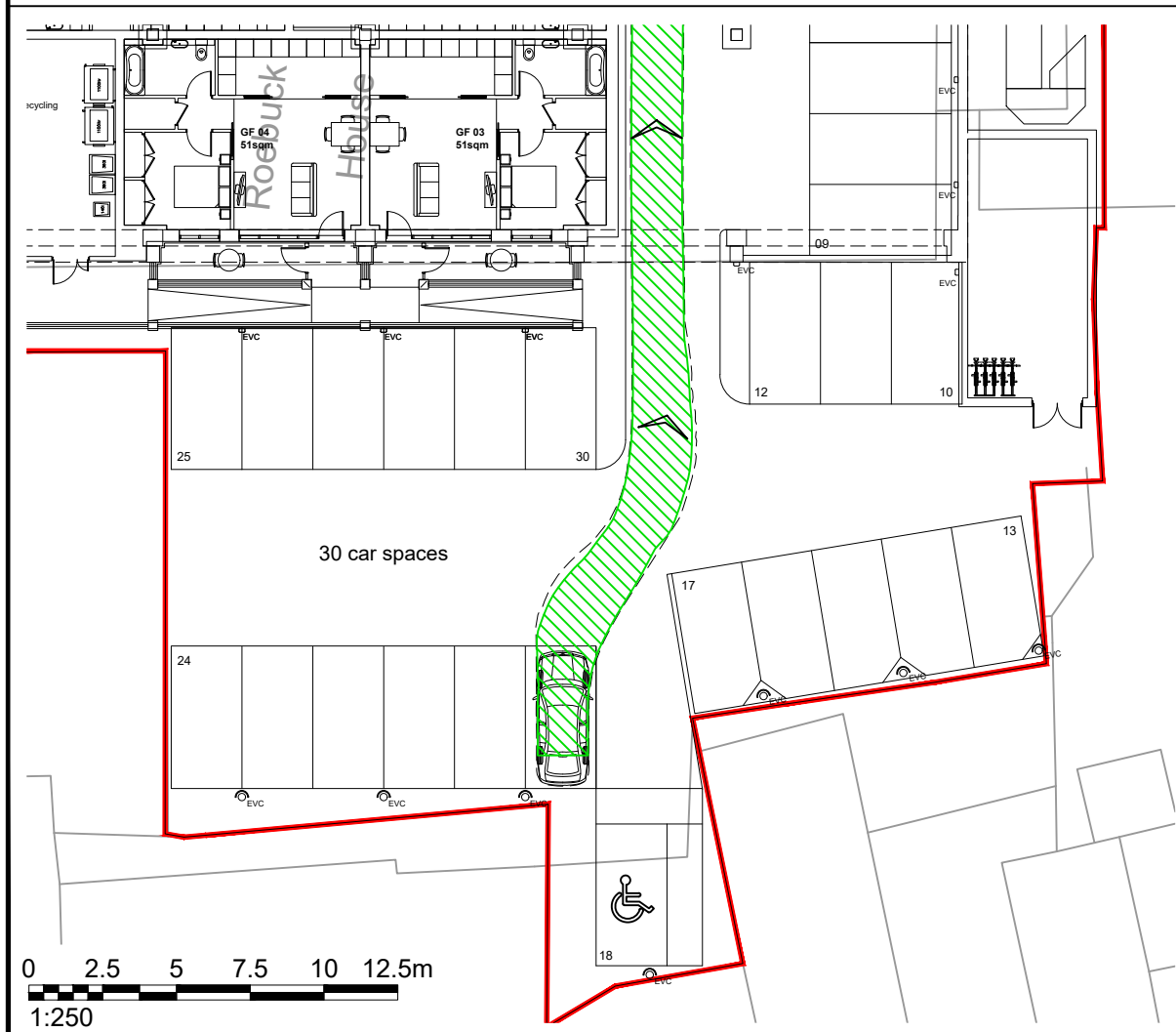
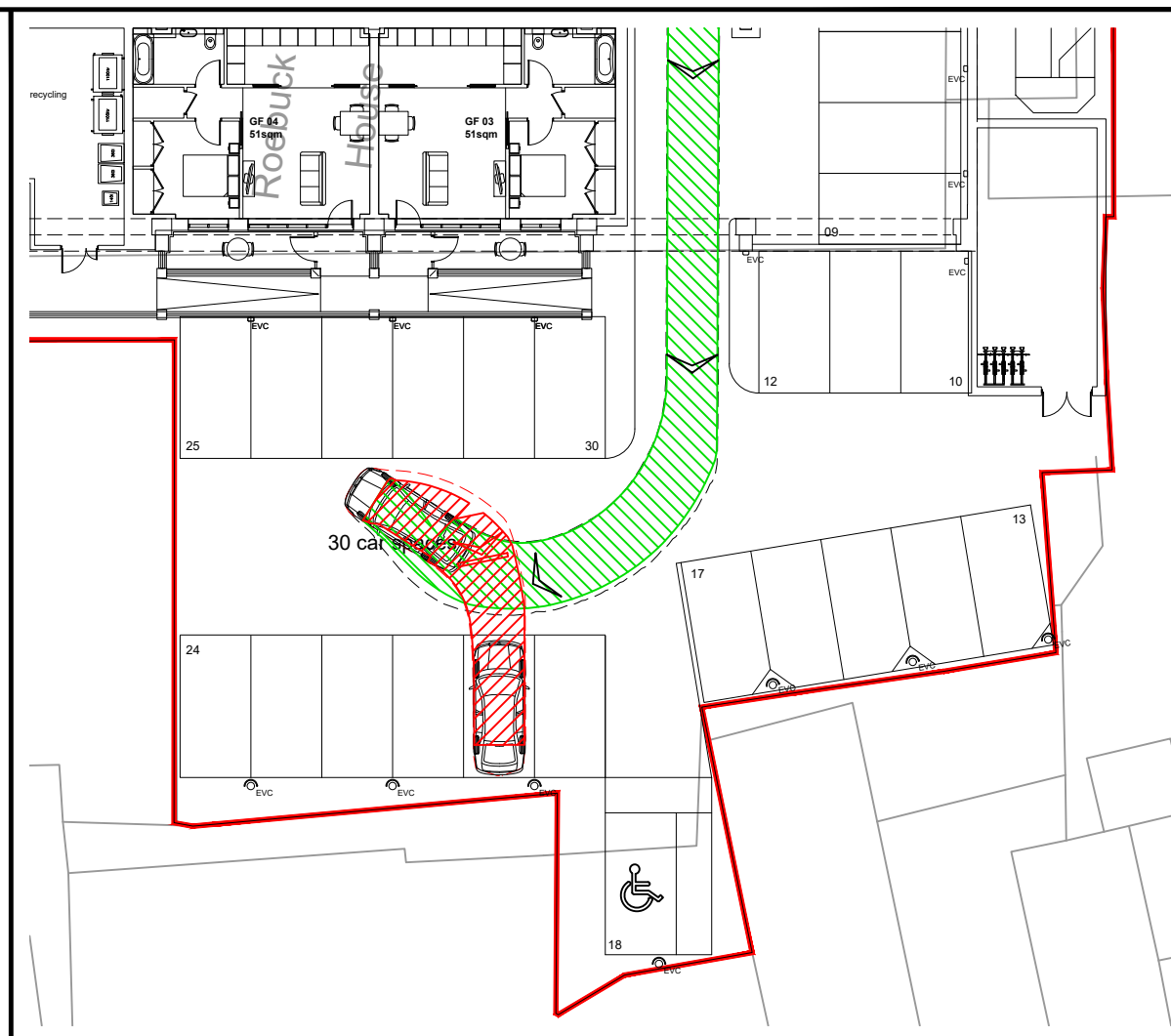
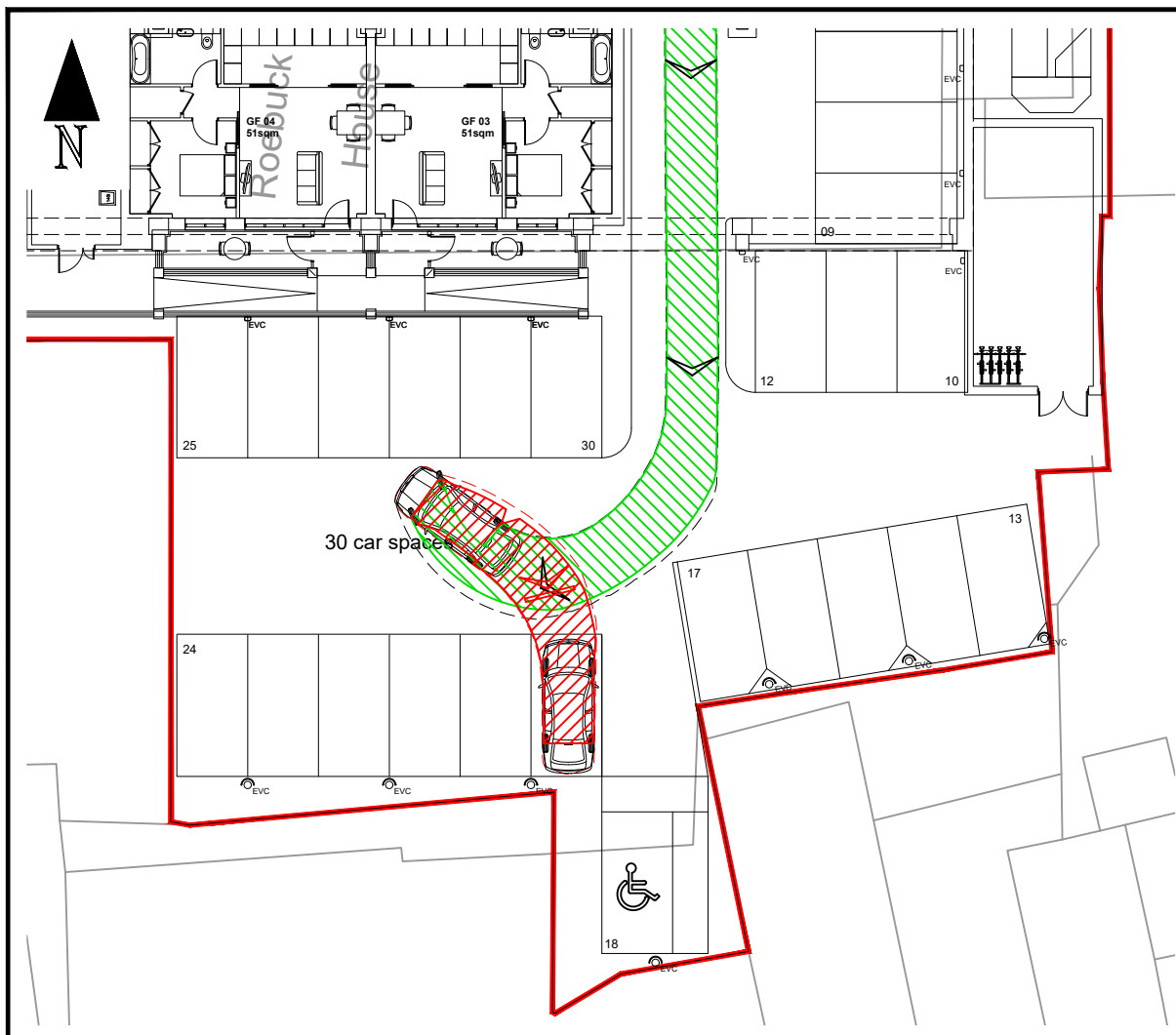
DRAWN BY
DW CHECKED BY
KH DATE
21.06.2023

pulsar
TRANSPORT PLANNING

48 Charlotte Street, London, W1T 2NS
Tel: 020 3701 0400
www.pulsartransport.co.uk

PROJECT REF 21037	DWG NO TR02 (2)	REV A
-----------------------------	---------------------------	-----------------

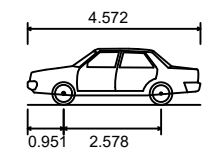




NOTES :

1. Do not scale from this drawing.
2. This drawing to be read & printed in colour.
3. This drawing is for illustrative purposes only, and not for construction.

MEDIUM SIZE CAR (Skoda Octavia)



Overall Length	4.572m
Overall Width	1.769m
Overall Body Height	1.488m
Min Body Ground Clearance	0.249m
Max Track Width	1.713m
Lock to Lock Time	4.00s
Kerb to Kerb Turning Radius	5.100m

- FORWARD MOVEMENTS
(design speed - 0.1kph)
- REVERSE MOVEMENTS
(design speed - 0.1kph)

A	Vehicle Tracking Updated	AEG	KH	23.06.23
REV	DETAILS	DRAWN	CHECKED	DATE

CLIENT
Roebuck Close Ltd

PROJECT
Roebuck House, Reigate

DRAWING TITLE
Vehicular Swept Paths Analysis using Medium Size Car (Sheet 3 of 6)

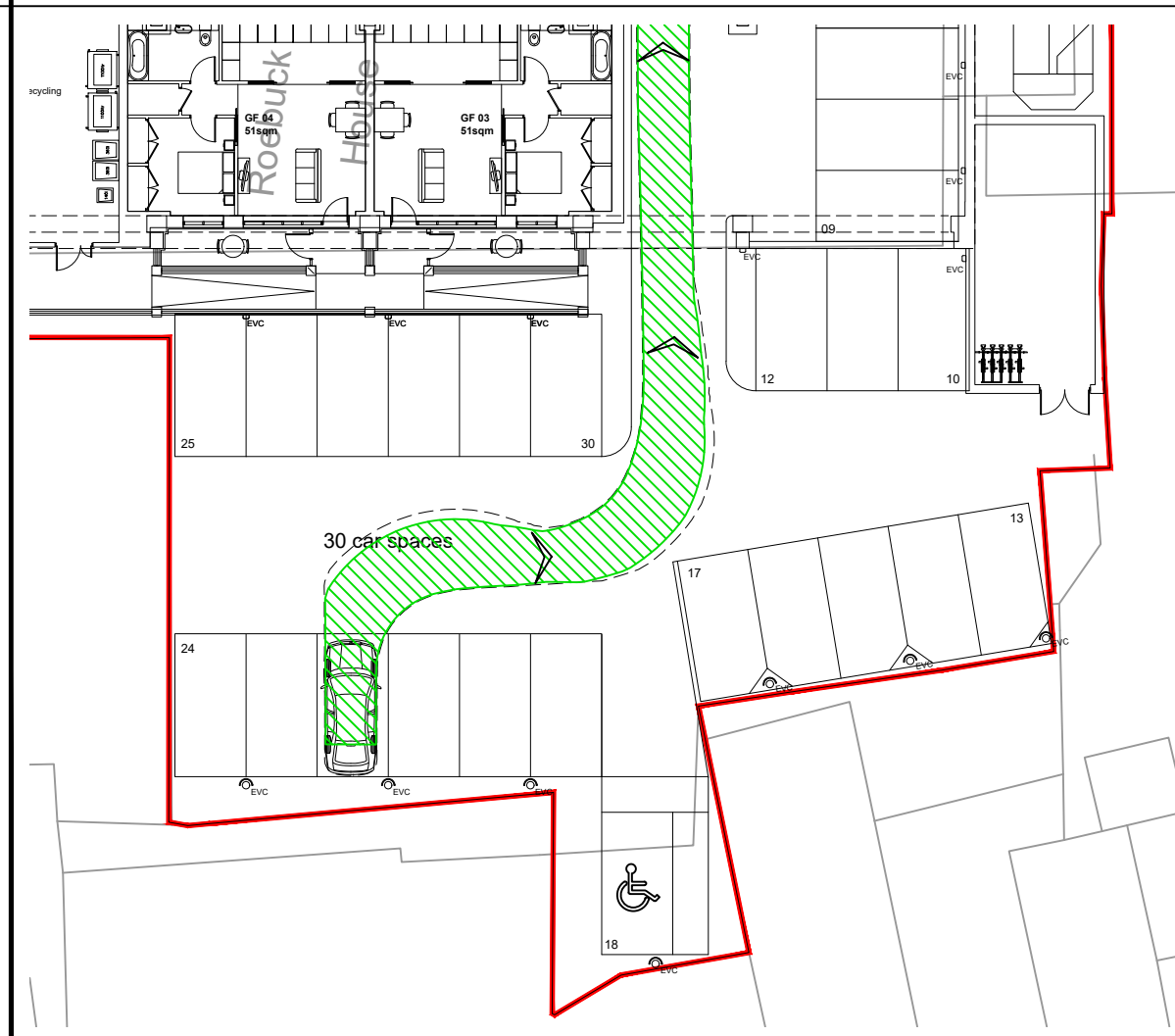
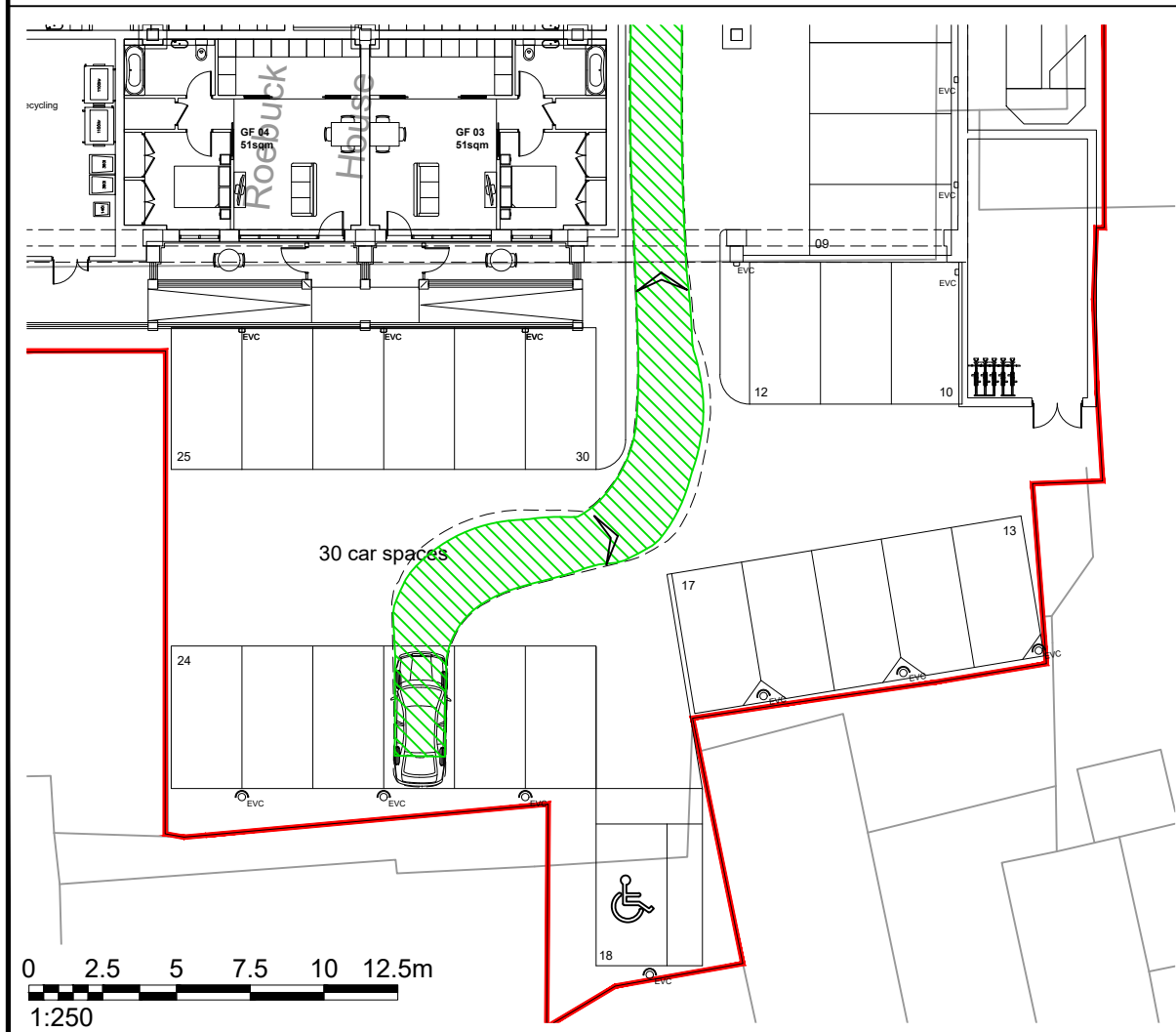
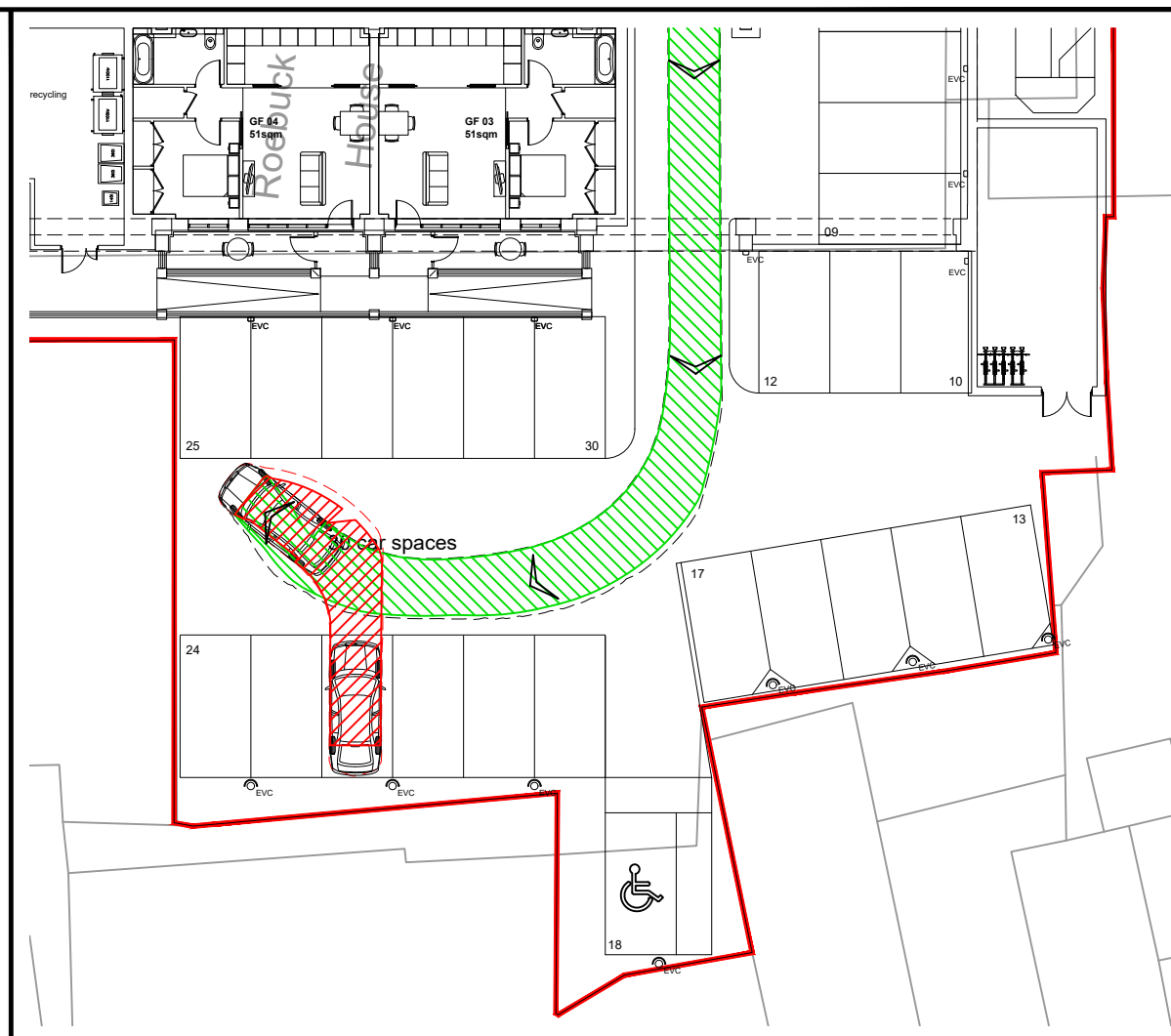
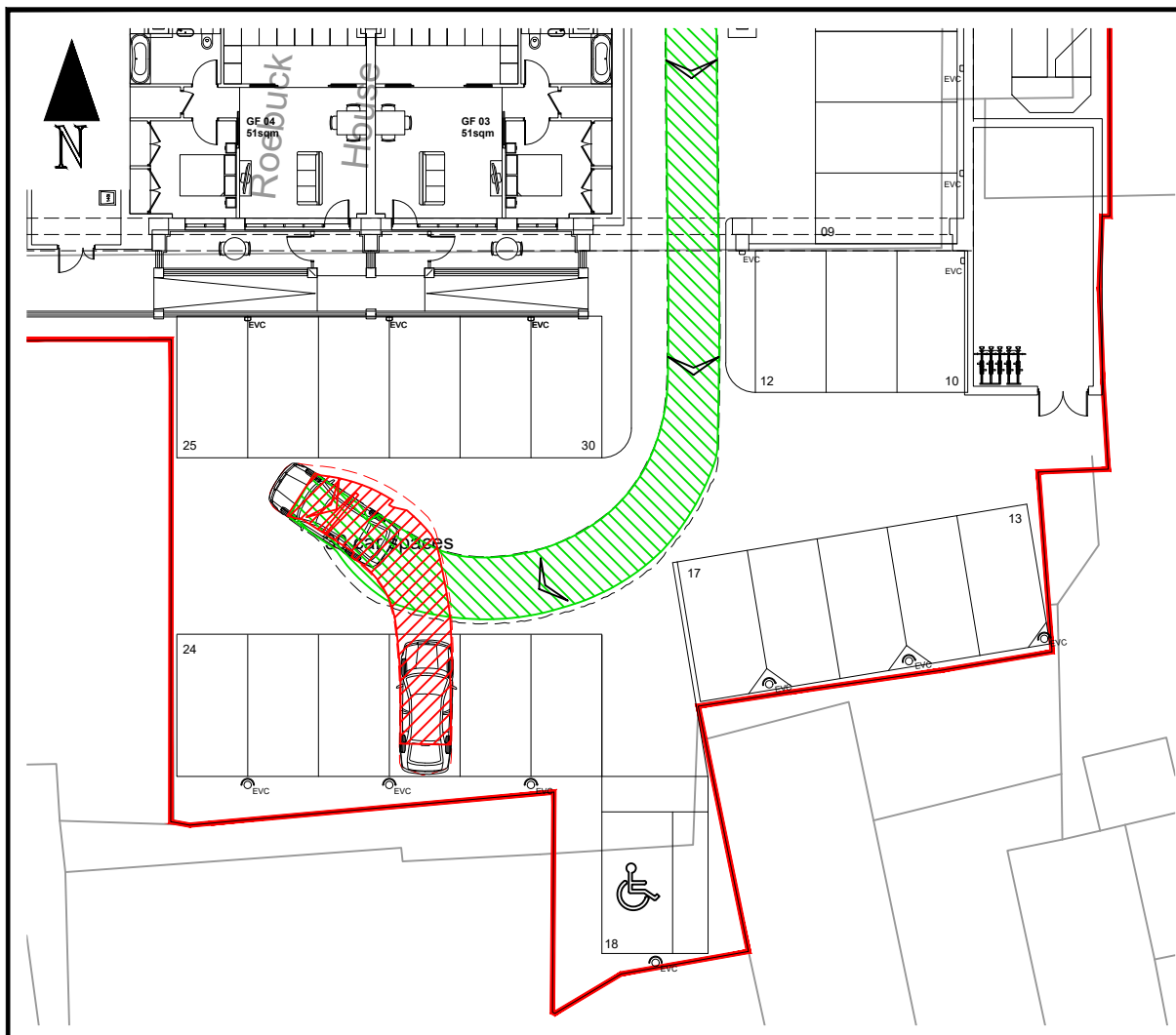
SCALE
1:250 SIZE
A3

DRAWN BY
DW CHECKED BY
KH DATE
21.06.2023

pulsar
TRANSPORT PLANNING

48 Charlotte Street, London, W1T 2NS
Tel: 020 3701 0400
www.pulsartransport.co.uk

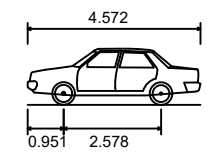
PROJECT REF 21037	DWG NO TR02 (3)	REV A
-----------------------------	---------------------------	-----------------



NOTES :

1. Do not scale from this drawing.
2. This drawing to be read & printed in colour.
3. This drawing is for illustrative purposes only, and not for construction.

MEDIUM SIZE CAR (Skoda Octavia)



Overall Length	4.572m
Overall Width	1.769m
Overall Body Height	1.488m
Min Body Ground Clearance	0.249m
Max Track Width	1.713m
Lock to Lock Time	4.00s
Kerb to Kerb Turning Radius	5.100m

- FORWARD MOVEMENTS
(design speed - 0.1kph)
- REVERSE MOVEMENTS
(design speed - 0.1kph)

A	Vehicle Tracking Updated	AEG	KH	23.06.23
REV	DETAILS	DRAWN	CHECKED	DATE

CLIENT
Roebuck Close Ltd

PROJECT
Roebuck House, Reigate

DRAWING TITLE
Vehicular Swept Paths Analysis using Medium Size Car (Sheet 4 of 6)

SCALE
1:250

SIZE
A3

DRAWN BY
DW

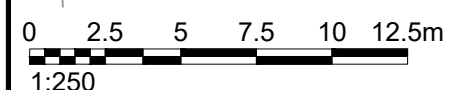
CHECKED BY
KH

DATE
21.06.2023

Pulsar
TRANSPORT PLANNING

48 Charlotte Street, London, W1T 2NS
Tel: 020 3701 0400
www.pulsartransport.co.uk

PROJECT REF 21037	DWG NO TR02 (4)	REV A
-----------------------------	---------------------------	-----------------

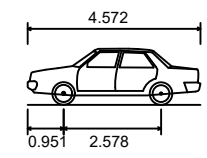




NOTES:

1. Do not scale from this drawing.
2. This drawing to be read & printed in colour.
3. This drawing is for illustrative purposes only, and not for construction.

MEDIUM SIZE CAR (Skoda Octavia)



Overall Length	4.572m
Overall Width	1.769m
Overall Body Height	1.488m
Min Body Ground Clearance	0.249m
Max Track Width	1.713m
Lock to Lock Time	4.00s
Kerb to Kerb Turning Radius	5.100m

- FORWARD MOVEMENTS
(design speed - 0.1kph)
- REVERSE MOVEMENTS
(design speed - 0.1kph)

A	Vehicle Tracking Updated	AEG	KH	23.06.23
REV	DETAILS	DRAWN	CHECKED	DATE

CLIENT
Roebuck Close Ltd

PROJECT
Roebuck House, Reigate

DRAWING TITLE
Vehicular Swept Paths Analysis using Medium Size Car (Sheet 5 of 6)

SCALE
1:250

SIZE
A3

DRAWN BY
DW

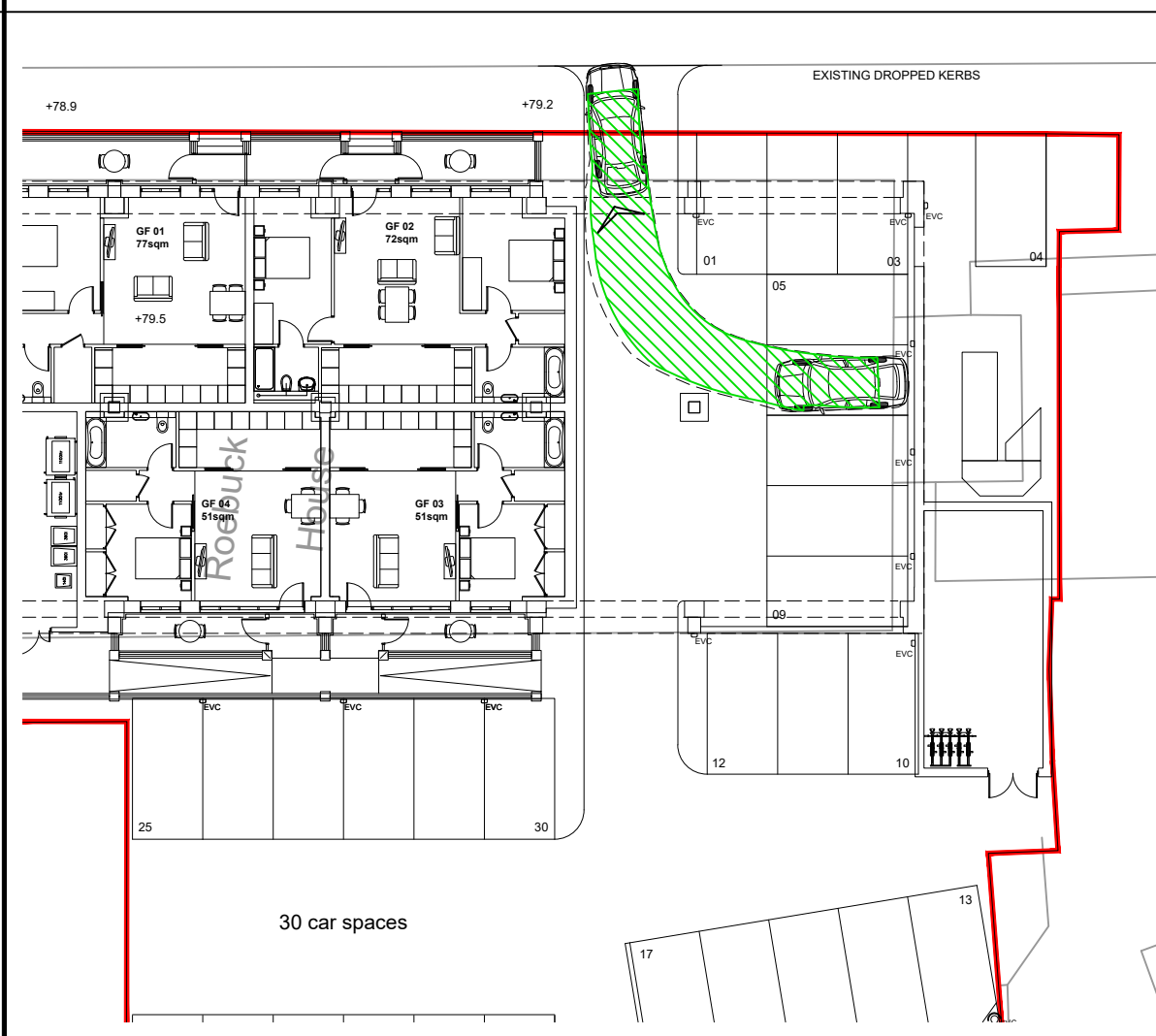
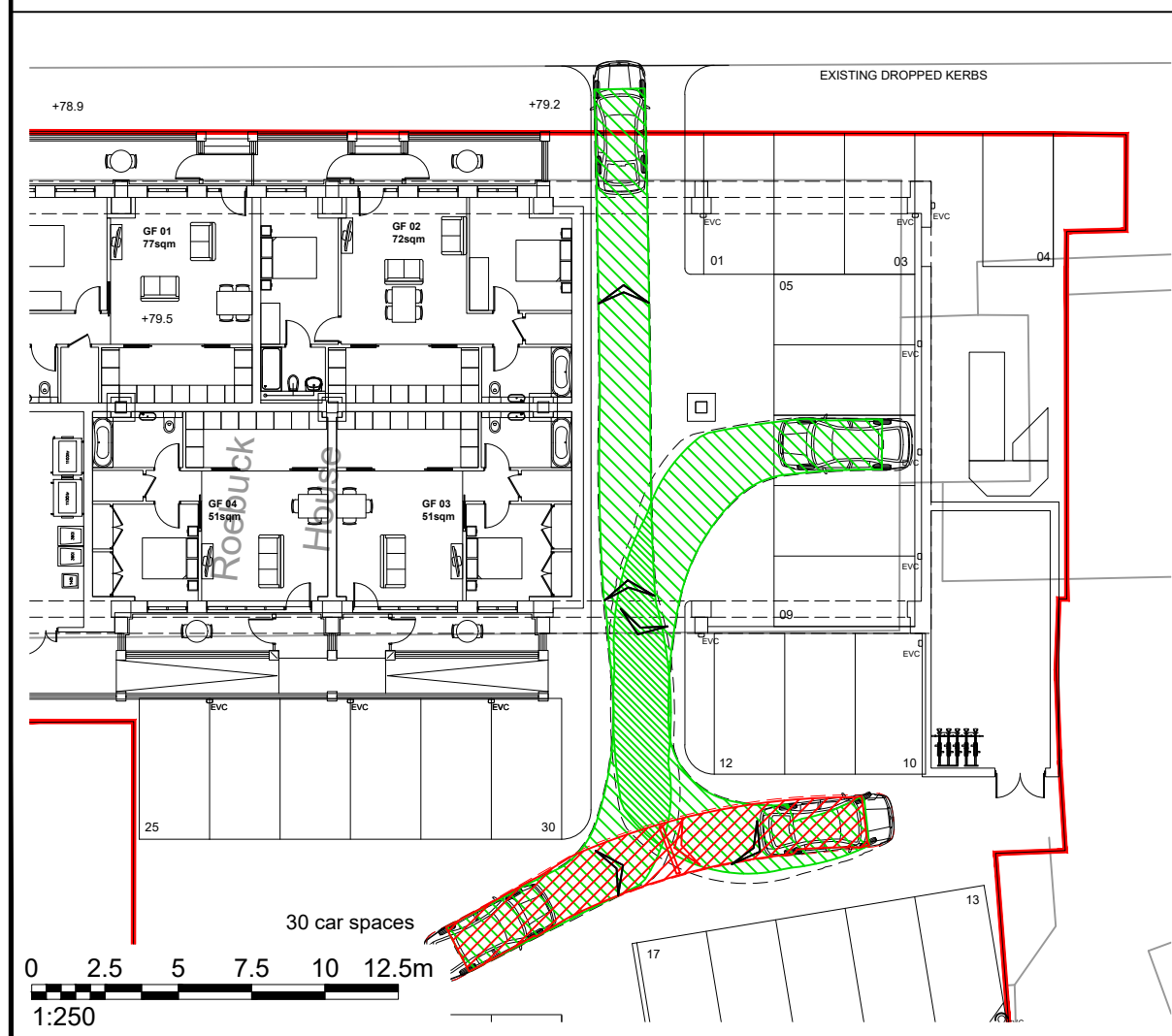
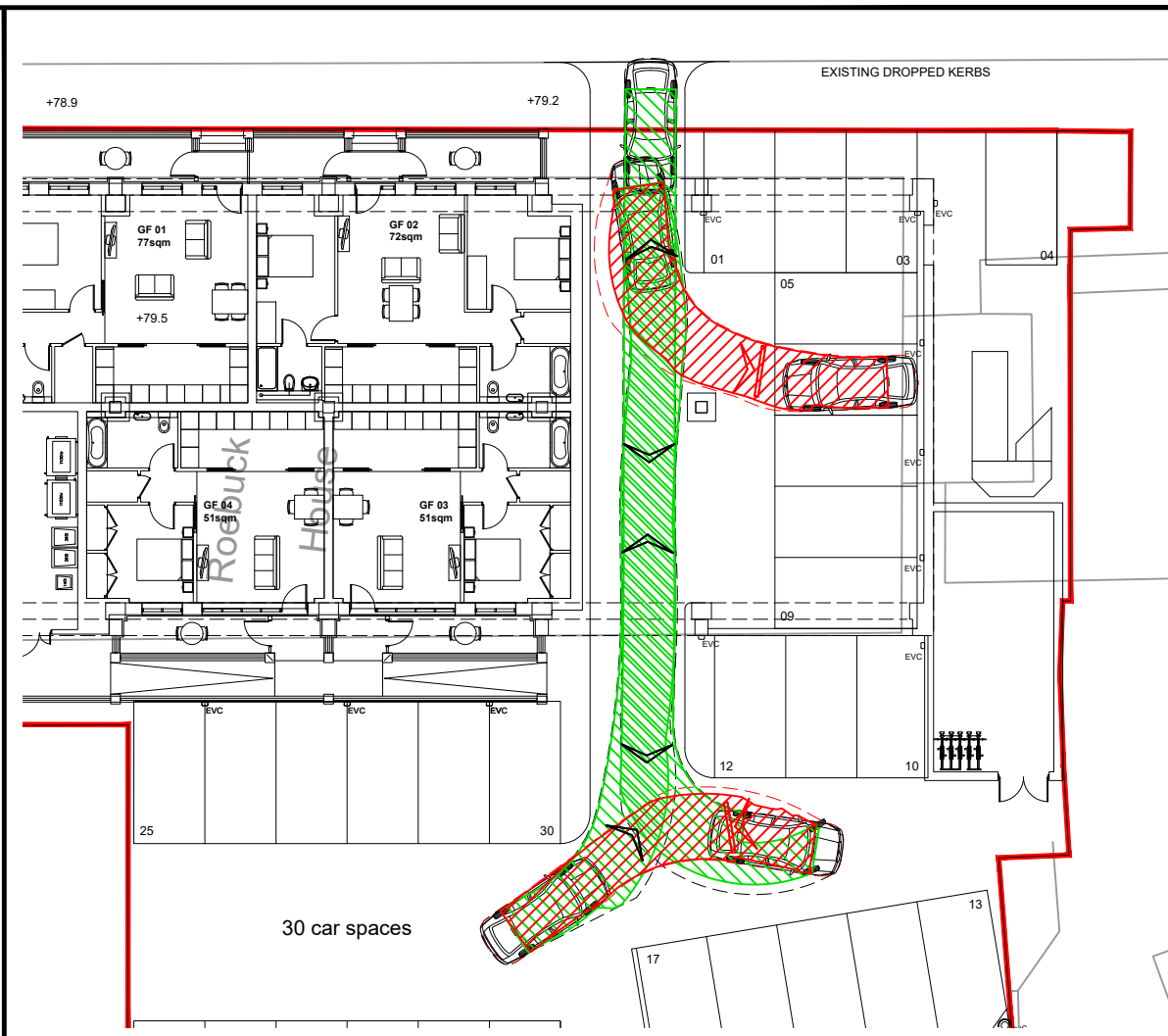
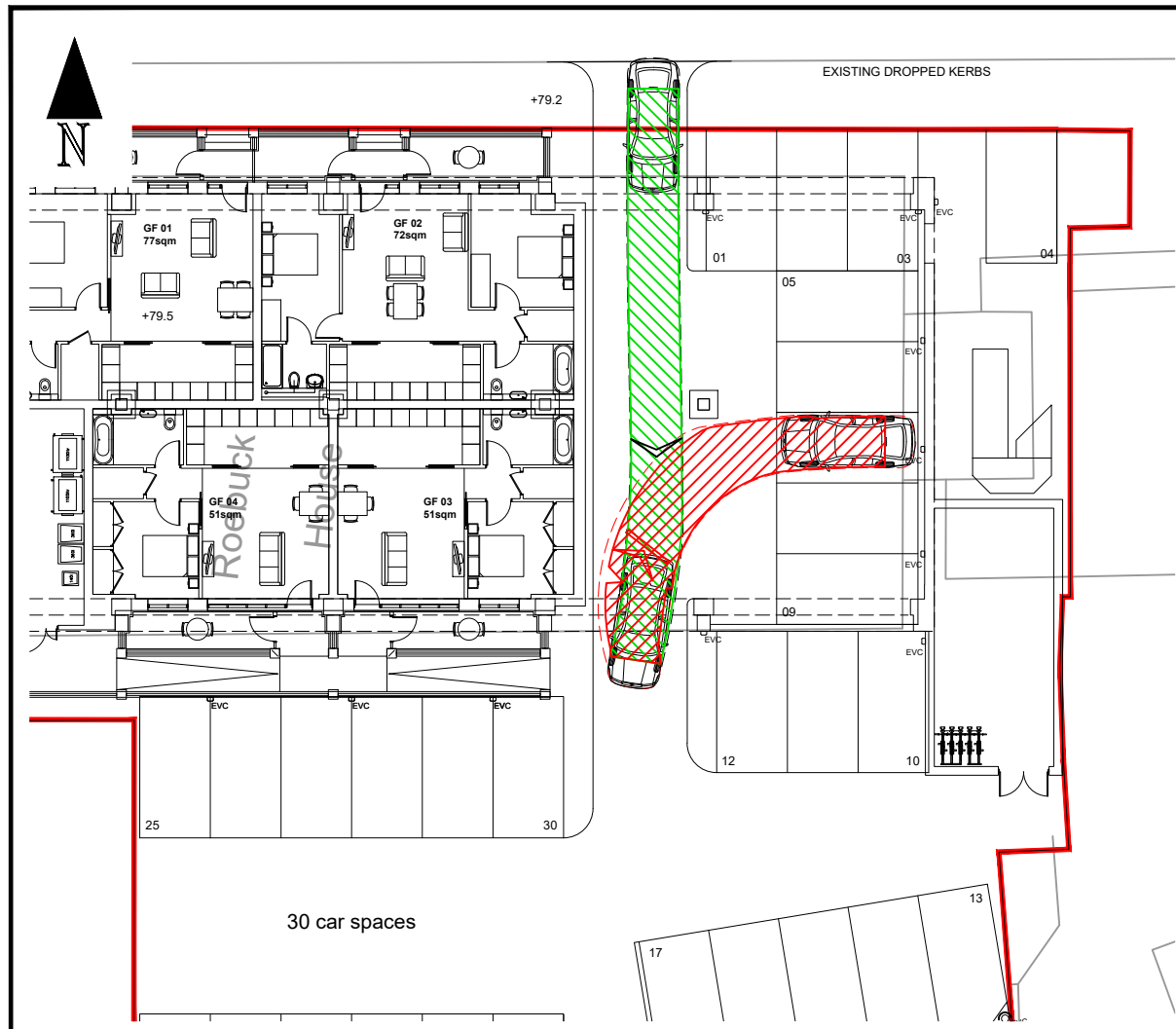
CHECKED BY
KH

DATE
21.06.2023

Pulsar
TRANSPORT PLANNING

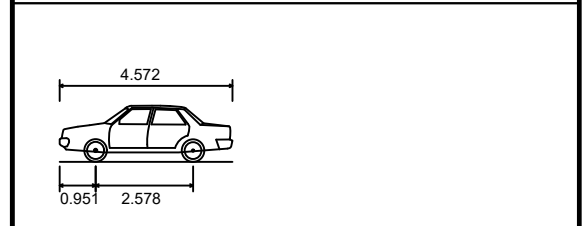
48 Charlotte Street, London, W1T 2NS
Tel: 020 3701 0400
www.pulsartransport.co.uk

PROJECT REF	DWG NO	REV
21037	TR02 (5)	A





- NOTES:**
1. Do not scale from this drawing.
 2. This drawing to be read & printed in colour.
 3. This drawing is for illustrative purposes only, and not for construction.

MEDIUM SIZE CAR (Skoda Octavia)



Overall Length	4.572m
Overall Width	1.769m
Overall Body Height	1.488m
Min Body Ground Clearance	0.249m
Max Track Width	1.713m
Lock to Lock Time	4.00s
Kerb to Kerb Turning Radius	5.100m

-  FORWARD MOVEMENTS (design speed - 0.1kph)
-  REVERSE MOVEMENTS (design speed - 0.1kph)

A	Vehicle Tracking Updated	AEG	KH	23.06.23
REV	DETAILS	DRAWN	CHECKED	DATE

CLIENT
Roebuck Close Ltd

PROJECT
Roebuck House, Reigate

DRAWING TITLE
Vehicular Swept Paths Analysis using Medium Size Car (Sheet 6 of 6)

SCALE
1:250

SIZE
A3

DRAWN BY
DW

CHECKED BY
KH

DATE
21.06.2023

Pulsar
TRANSPORT PLANNING

48 Charlotte Street, London, W1T 2NS
Tel: 020 3701 0400
www.pulsartransport.co.uk

PROJECT REF 21037	DWG NO TR02 (6)	REV A
-----------------------------	---------------------------	-----------------